



**Water Monitoring Result at C7 - Windsor House  
Mid-Flood Tide**

Date	Time	Weather Condition	Sampling Depth m		Water Temperature °C			pH			Salinity ppt			DO Saturation %		DO mg/L		Turbidity NTU		Suspended Solids mg/L				
					Value	Average	Value	Average	Value	Average	Value	Average	Value	Average	Value	Average	Value	Average	Value	Average	Value	Average		
27/4/18	8:50	Cloudy	Middle	-	24.30	24.30	24.35	8.01	8.01	8.19	32.68	32.68	32.68	78.1	77.8	77.7	5.41	5.39	5.39	7.01	7.00	7.00	4	3.50
	8:52		Middle	-	24.40	24.40		8.06	8.66		32.68	32.68		77.4	77.6		5.36	5.38		6.98	6.99		3	
30/4/18	17:35	Fine	Middle	-	25.40	25.40	25.40	7.96	7.96	7.96	32.47	32.47	32.47	79.6	80.9	79.0	5.37	5.45	5.31	2.74	2.62	1.97	7	5.00
	17:36		Middle	-	25.40	25.40		7.96	7.96		32.47	32.47		77.6	77.9		5.19	5.22		1.35	1.15		3	
2/5/18	22:15	Cloudy	Middle	-	25.00	25.00	25.00	7.91	7.91	7.91	31.03	31.03	31.03	75.1	77.2	76.1	4.95	5.09	5.02	1.15	1.08	1.08	7	5.00
	22:16		Middle	-	25.00	25.00		7.91	7.91		31.03	31.03		76.7	75.5		5.06	4.98		1.06	1.02		3	
4/5/18	8:05	Fine	Middle	-	25.10	25.10	25.10	8.15	8.15	8.16	32.34	32.34	32.34	79.4	79.3	79.3	5.44	5.44	5.44	7.17	7.18	7.16	11	11.50
	8:07		Middle	-	25.10	25.10		8.16	8.16		32.34	32.34		79.2	79.3		5.43	5.44		7.14	7.13		12	
7/5/18	5:50	Cloudy	Middle	-	25.40	25.40	25.40	8.13	8.13	8.13	32.60	32.60	32.60	78.4	77.7	78.1	5.35	5.31	5.34	1.85	1.24	1.56	5	4.50
	5:51		Middle	-	25.40	25.40		8.13	8.13		32.60	32.60		78.2	78.2		5.34	5.34		1.60	1.54		4	
10/5/18	23:57	Cloudy	Middle	-	23.30	23.30	23.30	8.15	8.15	8.15	31.23	31.23	31.23	76.0	77.5	77.0	5.39	5.31	5.43	4.68	4.36	4.34	3	3.50
	23:58		Middle	-	23.30	23.30		8.15	8.15		31.23	31.23		76.4	78.1		5.44	5.56		4.12	4.21		4	
12/5/18	15:30	Fine	Middle	-	26.30	26.30	26.45	8.21	8.21	8.21	32.64	32.64	32.64	86.9	86.8	86.3	5.82	5.81	5.78	8.70	8.66	8.67	15	14.00
	15:32		Middle	-	26.60	26.60		8.21	8.21		32.63	32.63		85.6	85.7		5.73	5.74		8.65	8.68		13	
14/5/18	16:35	Fine	Middle	-	28.20	28.20	28.35	8.16	8.16	8.17	31.35	31.35	31.34	80.3	80.3	80.8	5.34	5.34	5.31	9.62	9.61	9.79	8	8.50
	16:37		Middle	-	28.50	28.50		8.17	8.17		31.33	31.33		81.3	81.2		5.28	5.28		9.97	9.96		9	
16/5/18	20:02	Fine	Middle	-	27.50	27.50	27.50	8.01	8.01	8.01	30.61	30.61	30.61	76.1	77.4	76.4	5.07	5.15	5.09	6.06	5.89	5.77	10	9.00
	20:03		Middle	-	27.50	27.50		8.01	8.01		30.61	30.61		76.0	75.9		5.08	5.05		5.69	5.43		8	
19/5/18	8:25	Fine	Middle	1.5	27.40	27.40	27.50	8.15	8.15	8.14	29.15	29.15	29.15	71.5	71.7	71.5	4.80	4.81	4.80	7.25	7.29	7.30	2	2.00
	8:27		Middle	1.5	27.60	27.60		8.13	8.13		29.14	29.14		71.3	71.6		4.78	4.80		7.32	7.33		2	
21/5/18	9:10	Fine	Middle	1.5	28.30	28.30	28.40	8.04	8.04	8.05	29.57	29.57	29.55	67.2	67.7	67.7	4.43	4.46	4.45	6.99	6.99	7.00	2	2.50
	9:12		Middle	1.5	28.50	28.50		8.05	8.05		29.53	29.53		67.7	68.0		4.45	4.47		7.00	7.01		3	
23/5/18	11:30	Fine	Middle	1.5	28.80	28.80	28.85	8.21	8.21	8.20	29.19	29.19	29.19	73.8	74.2	74.4	4.84	4.86	4.88	7.62	7.71	7.70	6	5.00
	11:32		Middle	1.5	28.90	28.90		8.19	8.19		29.19	29.19		74.7	75.0		4.89	4.91		7.73	7.73		4	
25/5/18	14:45	Fine	Middle	1.5	29.50	29.50	29.60	8.36	8.36	8.37	29.44	29.44	29.44	104.5	104.6	104.1	6.76	6.76	6.73	7.34	7.25	7.30	4	5.00
	14:47		Middle	1.5	29.70	29.70		8.38	8.38		29.44	29.44		104.1	103.3		6.73	6.65		7.28	7.31		6	

Remarks:  
Single underline denotes exceedance over Action Level.  
Double underline denotes exceedance over Limit Level.



**Water Monitoring Result at C1 - HKCEC Extension  
Mid-Flood Tide**

Date	Time	Weather Condition	Sampling Depth		Water Temperature			pH			Salinity			DO Saturation			DO			Turbidity			Suspended Solids	
			m		°C		-		ppt		%		mg/L		NTU		mg/L							
					Value	Average	Value	Average	Value	Average	Value	Average	Value	Average	Value	Average	Value	Average	Value	Average				
27/4/18	10:35	Cloudy	Middle	2.5	23.80	23.80	23.80	8.19	8.19	8.19	32.79	32.59	32.69	82.2	82.0	83.6	5.75	5.74	5.76	8.48	8.44	8.46	4	4.50
	10:37		Middle	2.5	23.80	23.80		8.19	8.19		32.79	32.58		87.6	82.4		5.78	5.76		8.49	8.44		5	
30/4/18	19:39	Fine	Middle	3.0	25.30	25.30	25.30	8.00	8.00	8.00	32.51	32.51	32.51	73.2	74.4	73.2	4.92	4.99	4.92	3.66	3.55	3.58	5	6.50
	19:40		Middle	3.0	25.30	25.30		8.00	8.00		32.51	32.51		72.4	72.9		4.88	4.89		3.39	3.72		8	
2/5/18	21:42	Cloudy	Middle	3.0	23.80	23.80	23.80	8.05	8.05	8.05	32.40	32.40	32.40	76.3	77.6	77.3	5.08	5.17	5.15	2.61	2.51	2.40	5	6.50
	21:43		Middle	3.0	23.80	23.80		8.05	8.05		32.40	32.40		78.3	77.1		5.21	5.13		2.18	2.31		8	
4/5/18	10:05	Fine	Middle	3.0	24.30	24.30	24.30	8.30	8.30	8.30	32.85	32.85	32.85	86.6	86.7	86.6	6.01	6.02	6.01	9.13	9.08	9.11	9	8.50
	10:07		Middle	3.0	24.30	24.30		8.30	8.30		32.85	32.85		86.7	86.4		6.02	6.00		9.12	9.11		8	
7/5/18	5:10	Cloudy	Middle	3.0	25.60	25.60	25.60	8.04	8.04	8.04	32.85	32.85	32.85	74.5	75.6	74.8	5.06	5.13	5.07	1.09	1.13	1.08	4	4.00
	5:11		Middle	3.0	25.60	25.60		8.04	8.04		32.85	32.85		74.4	74.5		5.05	5.05		1.06	1.03		<2	
10/5/18	1:21	Cloudy	Middle	2.5	23.40	23.40	23.40	8.21	8.21	8.21	33.18	33.18	33.18	77.4	77.8	76.6	5.43	5.46	5.38	5.48	5.61	5.44	9	9.00
	1:22		Middle	2.5	23.40	23.40		8.21	8.21		33.18	33.18		74.6	76.7		5.24	5.38		5.32	5.34		9	
12/5/18	14:50	Fine	Middle	2.5	26.00	26.00	26.05	8.20	8.20	8.20	32.43	32.43	32.43	85.2	85.1	85.3	5.75	5.74	5.75	8.80	8.83	8.85	6	5.50
	14:52		Middle	2.5	26.10	26.10		8.20	8.20		32.43	32.43		85.4	85.3		5.76	5.75		8.89	8.88		5	
14/5/18	15:55	Fine	Middle	2.5	27.70	27.70	27.65	8.20	8.20	8.20	30.96	30.96	30.96	85.1	85.3	85.0	5.63	5.64	5.62	9.61	9.58	9.60	8	7.50
	15:57		Middle	2.5	27.60	27.60		8.20	8.20		30.96	30.96		84.7	84.8		5.60	5.61		9.60	9.60		7	
16/5/18	19:25	Fine	Middle	2.5	27.50	27.50	27.50	8.10	8.10	8.10	30.66	30.66	30.66	80.0	80.4	78.9	5.33	5.35	5.25	6.70	6.45	6.45	7	8.50
	19:26		Middle	2.5	27.50	27.50		8.10	8.10		30.66	30.66		77.1	77.9		5.13	5.19		6.19	6.44		10	
19/5/18	10:25	Fine	Middle	3.0	27.40	27.40	27.45	8.20	8.20	8.21	30.06	30.06	30.06	78.8	79.4	79.2	5.26	5.31	5.29	8.50	8.50	8.50	2	2.50
	10:27		Middle	3.0	27.50	27.50		8.21	8.21		30.06	30.06		79.4	79.2		5.30	5.29		8.50	8.51		3	
21/5/18	11:50	Fine	Middle	3.0	27.80	27.80	27.70	8.22	8.22	8.22	30.25	30.25	30.25	80.7	81.0	81.0	5.37	5.39	5.39	7.64	7.73	7.69	2	2.50
	11:52		Middle	3.0	27.60	27.60		8.22	8.22		30.25	30.25		80.9	81.4		5.39	5.42		7.71	7.69		3	
23/5/18	15:50	Fine	Middle	3.0	29.00	29.00	29.00	8.33	8.33	8.33	29.73	29.73	29.73	90.3	90.3	90.4	5.89	5.89	5.89	8.25	8.28	8.29	4	4.00
	15:52		Middle	3.0	29.00	29.00		8.33	8.33		29.73	29.73		90.5	90.4		5.90	5.88		8.28	8.33		4	
25/5/18	14:15	Fine	Middle	2.5	28.50	28.50	28.55	8.40	8.40	8.40	29.43	29.43	29.43	91.7	91.4	91.1	6.04	6.02	6.00	8.20	8.14	8.16	6	5.00
	14:17		Middle	2.5	28.60	28.60		8.40	8.40		29.42	29.42		90.5	90.8		5.96	5.99		8.13	8.18		4	

Remarks:  
Single underline denotes exceedance over Action Level.  
Double underline denotes exceedance over Limit Level.



**Water Monitoring Result at P1 - HKCEC Phase I  
Mid-Flood Tide**

Date	Time	Weather Condition	Sampling Depth m	Water Temperature °C			pH			Salinity ppt			DO Saturation %		DO mg/L		Turbidity NTU		Suspended Solids mg/L					
				Value	Average		Value	Average		Value	Average		Value	Average	Value	Average	Value	Average	Value	Average				
27/4/18	10:15	Cloudy	Middle	2.5	24.40	24.40	24.45	8.15	8.15	8.16	32.79	32.79	32.79	81.9	81.8	82.0	5.67	5.66	5.67	8.33	8.30	8.30	<2	<2
	10:17		Middle	2.5	24.50	24.50		8.16	8.16		32.79	32.79		82.1	82.3		5.67	5.69		8.28	8.28		<2	
30/4/18	19:02	Fine	Middle	3.0	25.20	25.20	25.20	8.02	8.02	8.02	32.31	32.31	32.26	74.6	76.9	76.0	5.02	5.17	5.11	1.95	1.68	1.51	6	4.50
	19:03		Middle	3.0	25.20	25.20		8.02	8.02		32.21	32.21		75.0	77.4		5.05	5.21		1.22	1.19		3	
2/5/18	21:17	Cloudy	Middle	3.0	23.70	23.70	23.70	8.07	8.07	8.07	32.19	32.19	32.19	76.3	76.4	76.9	5.10	5.11	5.14	1.78	1.15	1.34	6	4.50
	21:18		Middle	3.0	23.70	23.70		8.07	8.07		32.19	32.19		77.7	77.2		5.20	5.16		1.23	1.20		3	
4/5/18	9:45	Fine	Middle	3.0	24.60	24.60	24.65	8.26	8.26	8.27	32.71	32.71	32.72	88.0	88.4	88.2	6.07	6.10	6.09	8.54	8.54	8.54	5	5.50
	9:47		Middle	3.0	24.70	24.70		8.27	8.27		32.72	32.72		88.0	88.5		6.07	6.10		8.55	8.51		6	
7/5/18	4:40	Cloudy	Middle	3.0	25.40	25.40	25.40	8.14	8.14	8.14	32.91	32.91	32.91	77.7	79.0	78.4	5.29	5.38	5.34	1.28	1.30	1.26	3	2.50
	4:41		Middle	3.0	25.40	25.40		8.14	8.14		32.91	32.91		78.4	78.3		5.34	5.33		1.26	1.18		2	
10/5/18	0:50	Cloudy	Middle	2.5	23.40	23.40	23.40	8.20	8.20	8.20	32.41	32.41	32.41	77.4	80.3	79.7	5.47	5.57	5.60	5.72	5.48	5.48	10	10.50
	0:51		Middle	2.5	23.40	23.40		8.20	8.20		32.41	32.41		79.6	81.3		5.61	5.73		5.51	5.19		11	
12/5/18	14:30	Fine	Middle	2.5	27.80	27.80	27.90	8.22	8.22	8.22	32.57	32.57	32.57	88.2	87.7	87.9	5.77	5.73	5.73	9.58	9.60	9.61	5	6.00
	14:32		Middle	2.5	28.00	28.00		8.21	8.21		32.56	32.56		87.7	88.1		5.72	5.71		9.63	9.64		7	
14/5/18	15:35	Fine	Middle	2.5	29.20	29.20	29.35	8.21	8.21	8.21	30.99	30.99	30.99	83.2	83.2	84.2	5.35	5.34	5.40	9.52	9.48	9.53	8	9.00
	15:37		Middle	2.5	29.50	29.50		8.20	8.20		30.98	30.98		85.1	85.2		5.46	5.46		9.55	9.56		10	
16/5/18	18:55	Fine	Middle	2.5	27.20	27.20	27.20	8.11	8.11	8.11	30.71	30.71	30.71	78.2	79.0	78.1	5.22	5.24	5.21	6.34	6.19	6.14	8	7.00
	18:56		Middle	2.5	27.20	27.20		8.11	8.11		30.71	30.71		78.0	77.3		5.21	5.17		5.94	6.07		6	
19/5/18	10:05	Fine	Middle	3.0	28.20	28.20	28.20	8.18	8.18	8.19	30.23	30.23	30.23	84.1	83.6	83.6	5.54	5.51	5.51	8.58	8.57	8.58	3	3.00
	10:07		Middle	3.0	28.20	28.20		8.19	8.19		30.23	30.23		83.3	83.4		5.49	5.49		8.58	8.58		3	
21/5/18	11:30	Fine	Middle	3.0	28.50	28.50	28.55	8.18	8.18	8.19	30.37	30.37	30.37	81.7	81.6	81.8	5.35	5.34	5.35	8.56	8.57	8.57	<2	2.00
	11:32		Middle	3.0	28.60	28.60		8.19	8.19		30.37	30.37		81.8	82.1		5.35	5.37		8.57	8.58		2	
23/5/18	15:30	Fine	Middle	3.0	30.60	30.60	30.75	8.34	8.34	8.34	29.48	29.48	29.48	101.2	101.0	100.6	6.42	6.40	6.37	8.18	8.19	8.19	6	6.00
	15:32		Middle	3.0	30.90	30.90		8.34	8.34		29.48	29.48		100.0	100.0		6.33	6.33		8.19	8.18		6	
25/5/18	13:55	Fine	Middle	2.5	29.60	29.60	29.70	8.46	8.46	8.45	29.55	29.55	29.55	97.0	97.0	96.6	6.26	6.26	6.23	8.30	8.29	8.28	6	5.00
	13:57		Middle	2.5	29.80	29.80		8.44	8.44		29.54	29.54		96.4	96.0		6.21	6.19		8.27	8.26		4	

Remarks:  
Single underline denotes exceedance over Action Level.  
Double underline denotes exceedance over Limit Level.



**Water Monitoring Result at P3 - APA  
Mid-Flood Tide**

Date	Time	Weather Condition	Sampling Depth		Water Temperature			pH			Salinity		DO Saturation		DO		Turbidity		Suspended Solids					
					°C			-			ppt		%		mg/L		NTU		mg/L					
			m	Value	Average	Value	Average	Value	Average	Value	Average	Value	Average	Value	Average	Value	Average	Value	Average	Value	Average			
27/4/18	10:20	Cloudy	Middle	2.5	23.50	23.50	23.70	8.18	8.18	8.18	32.78	32.78	32.78	82.9	83.5	83.4	5.88	5.84	5.86	9.11	9.11	9.15	<2	<2
	10:22		Middle	2.5	23.90	23.90		8.18	8.18		32.78	32.78		83.7	83.6		5.85	5.85		9.17	9.22		<2	
30/4/18	19:11	Fine	Middle	3.0	25.20	25.20	25.20	8.01	8.01	8.01	32.38	32.38	32.38	76.4	76.7	77.7	5.14	5.16	5.23	3.25	3.18	3.14	7	6.00
	19:12		Middle	3.0	25.20	25.20		8.01	8.01		32.38	32.38		79.1	78.4		5.32	5.28		3.09	3.05		5	
2/5/18	21:23	Cloudy	Middle	3.0	23.60	23.60	23.60	8.05	8.05	8.05	32.18	32.18	32.18	80.6	78.8	79.2	5.40	5.27	5.30	2.96	2.14	2.55	7	6.00
	21:24		Middle	3.0	23.60	23.60		8.05	8.05		32.18	32.18		78.5	79.0		5.25	5.28		2.58	2.50		5	
4/5/18	9:50	Fine	Middle	3.0	24.20	24.20	24.25	8.28	8.28	8.28	32.69	32.69	32.69	86.1	86.2	86.0	5.98	5.90	5.95	8.20	8.20	8.19	8	7.00
	9:52		Middle	3.0	24.30	24.30		8.28	8.28		32.69	32.69		86.1	85.6		5.98	5.95		8.21	8.14		6	
7/5/18	4:47	Cloudy	Middle	3.0	25.60	25.60	25.60	8.14	8.14	8.14	32.93	32.93	32.93	76.5	77.4	77.4	5.19	5.25	5.26	1.13	1.16	1.12	4	4.00
	4:48		Middle	3.0	25.60	25.60		8.14	8.14		32.93	32.93		77.0	78.7		5.27	5.34		1.10	1.08		4	
10/5/18	0:57	Cloudy	Middle	2.5	23.40	23.40	23.40	8.20	8.20	8.20	32.95	32.95	33.04	77.4	78.4	75.7	5.45	5.52	5.33	4.18	4.09	4.39	9	8.00
	0:58		Middle	2.5	23.40	23.40		8.20	8.20		33.13	33.12		73.0	74.0		5.14	5.21		4.64	4.64		7	
12/5/18	14:35	Fine	Middle	2.5	26.40	26.40	26.40	8.22	8.22	8.22	32.45	32.45	32.46	84.8	85.2	85.0	5.69	5.72	5.70	8.49	8.50	8.51	8	7.00
	14:37		Middle	2.5	26.40	26.40		8.21	8.21		32.46	32.46		84.8	85.1		5.68	5.69		8.50	8.54		6	
14/5/18	15:40	Fine	Middle	2.5	28.00	28.00	28.10	8.20	8.20	8.20	30.85	30.85	30.85	81.5	82.0	81.7	5.36	5.40	5.38	9.22	9.22	9.17	7	7.50
	15:42		Middle	2.5	28.20	28.20		8.20	8.20		30.84	30.84		81.7	81.7		5.37	5.37		9.13	9.12		8	
16/5/18	19:05	Fine	Middle	2.5	27.20	27.20	27.20	8.11	8.11	8.11	30.61	30.61	30.61	76.2	76.1	77.5	5.10	5.09	5.19	5.85	5.32	5.45	14	12.50
	19:06		Middle	2.5	27.20	27.20		8.11	8.11		30.61	30.61		79.5	78.2		5.32	5.23		5.34	5.29		11	
19/5/18	10:10	Fine	Middle	3.0	27.60	27.60	27.65	8.19	8.19	8.19	30.22	30.22	30.22	80.2	80.2	80.2	5.34	5.34	5.34	8.57	8.59	8.63	5	4.00
	10:12		Middle	3.0	27.70	27.70		8.19	8.19		30.22	30.22		80.3	80.0		5.34	5.32		8.67	8.68		3	
21/5/18	11:35	Fine	Middle	3.0	27.80	27.80	27.80	8.21	8.21	8.21	30.21	30.21	30.22	80.4	80.8	81.1	5.23	5.27	5.33	7.76	7.75	7.80	2	2.00
	11:37		Middle	3.0	27.80	27.80		8.21	8.21		30.23	30.23		81.3	81.8		5.39	5.42		7.84	7.86		<2	
23/5/18	15:35	Fine	Middle	3.0	29.90	29.90	29.95	8.36	8.36	8.36	29.33	29.33	29.33	99.1	97.9	98.7	6.36	6.29	6.34	6.51	6.60	6.62	5	6.00
	15:37		Middle	3.0	30.00	30.00		8.36	8.36		29.33	29.33		99.2	98.6		6.37	6.34		6.72	6.63		7	
25/5/18	14:00	Fine	Middle	2.5	28.60	28.60	28.65	8.42	8.42	8.42	29.51	29.51	29.51	93.0	92.7	92.7	6.11	6.09	6.09	8.29	8.26	8.27	3	3.50
	14:02		Middle	2.5	28.70	28.70		8.41	8.41		29.51	29.51		92.8	92.2		6.09	6.05		8.27	8.27		4	

Remarks:  
Single underline denotes exceedance over Action Level.  
Double underline denotes exceedance over Limit Level.



**Water Monitoring Result at P4 - SOC  
Mid-Flood Tide**

Date	Time	Weather Condition	Sampling Depth		Water Temperature			pH			Salinity			DO Saturation			DO			Turbidity			Suspended Solids	
			m		°C		-		ppt		%		mg/L		NTU		mg/L							
					Value	Average	Value	Average	Value	Average	Value	Average	Value	Average	Value	Average	Value	Average	Value	Average				
27/4/18	10:25	Cloudy	Middle	2.5	23.70	23.70	23.70	8.19	8.19	8.19	32.75	32.75	32.75	81.2	81.6	81.8	5.70	5.72	5.74	8.57	8.59	8.54	<2	<2
	10:27		Middle	2.5	23.70	23.70		8.19	8.19		32.75	32.75		82.0	82.3		5.75	5.77		8.51	8.50		<2	
30/4/18	19:18	Fine	Middle	3.0	25.20	25.20	25.20	8.04	8.04	8.04	32.48	32.48	32.48	77.7	78.1	78.3	5.28	5.25	5.29	6.30	6.20	6.26	10	10.00
	19:19		Middle	3.0	25.20	25.20		8.04	8.04		32.48	32.48		79.7	77.5		5.35	5.26		6.41	6.12		10	
2/5/18	21:31	Cloudy	Middle	3.0	23.60	23.60	23.60	8.05	8.05	8.05	32.31	32.31	32.31	77.3	76.6	77.6	5.18	5.13	5.20	3.11	3.02	3.01	10	10.00
	21:32		Middle	3.0	23.60	23.60		8.05	8.05		32.31	32.31		78.0	78.6		5.22	5.26		2.94	2.97		10	
4/5/18	9:55	Fine	Middle	3.0	24.30	24.30	24.30	8.28	8.28	8.28	32.77	32.77	32.77	86.4	86.5	86.3	5.99	6.00	5.98	8.55	8.51	8.56	6	5.50
	9:57		Middle	3.0	24.30	24.30		8.28	8.28		32.77	32.77		86.3	85.8		5.99	5.95		8.57	8.61		5	
7/5/18	4:53	Cloudy	Middle	3.0	25.70	25.70	25.70	8.12	8.12	8.12	32.88	32.88	32.88	78.8	79.0	78.5	5.34	5.36	5.32	1.11	1.05	1.07	4	4.50
	4:54		Middle	3.0	25.70	25.70		8.12	8.12		32.88	32.88		77.9	78.2		5.28	5.29		1.08	1.03		5	
10/5/18	1:13	Cloudy	Middle	2.5	23.30	23.30	23.30	8.20	8.20	8.20	33.14	33.14	33.14	72.7	74.9	72.7	5.20	5.28	5.15	4.01	3.43	3.78	8	8.00
	1:14		Middle	2.5	23.30	23.30		8.20	8.20		33.14	33.14		71.9	71.3		5.07	5.04		3.92	3.74		8	
12/5/18	14:40	Fine	Middle	2.5	26.00	26.00	26.05	8.21	8.21	8.21	32.46	32.46	32.46	84.7	85.0	84.9	5.71	5.73	5.72	7.87	7.89	7.89	4	5.00
	14:42		Middle	2.5	26.10	26.10		8.21	8.21		32.46	32.46		85.5	84.4		5.76	5.68		7.89	7.90		6	
14/5/18	15:45	Fine	Middle	2.5	28.10	28.10	28.20	8.20	8.20	8.20	30.87	30.87	30.87	85.0	85.1	84.8	5.59	5.59	5.57	9.10	9.10	9.08	8	8.50
	15:47		Middle	2.5	28.30	28.30		8.20	8.20		30.86	30.86		84.5	84.6		5.55	5.55		9.06	9.06		9	
16/5/18	19:13	Fine	Middle	2.5	27.30	27.30	27.30	8.11	8.11	8.11	30.63	30.63	30.63	79.3	79.4	79.5	5.29	5.30	5.31	6.62	6.32	6.36	8	9.00
	19:14		Middle	2.5	27.30	27.30		8.11	8.11		30.63	30.63		79.0	80.4		5.27	5.37		6.30	6.18		10	
19/5/18	10:15	Fine	Middle	3.0	27.50	27.50	27.50	8.20	8.20	8.20	30.00	30.00	30.01	80.2	80.4	80.3	5.36	5.37	5.36	8.50	8.52	8.50	4	3.50
	10:17		Middle	3.0	27.50	27.50		8.20	8.20		30.02	30.02		80.0	80.5		5.35	5.37		8.49	8.49		3	
21/5/18	11:40	Fine	Middle	3.0	27.60	27.60	27.60	8.21	8.21	8.21	30.33	30.33	30.34	77.9	78.5	78.3	5.19	5.23	5.22	8.22	8.25	8.25	2	3.00
	11:42		Middle	3.0	27.60	27.60		8.21	8.21		30.34	30.34		78.4	78.2		5.24	5.20		8.25	8.26		4	
23/5/18	15:40	Fine	Middle	3.0	29.30	29.30	29.35	8.35	8.35	8.35	29.51	29.51	29.51	97.2	97.1	97.0	6.32	6.31	6.28	8.13	8.13	8.14	5	5.00
	15:42		Middle	3.0	29.40	29.40		8.35	8.35		29.50	29.50		96.7	96.9		6.28	6.19		8.16	8.13		5	
25/5/18	14:05	Fine	Middle	2.5	28.30	28.30	28.30	8.41	8.41	8.41	29.46	29.46	29.47	93.3	93.6	93.2	6.17	6.19	6.16	7.55	7.67	7.59	5	4.00
	14:07		Middle	2.5	28.30	28.30		8.41	8.41		29.47	29.47		92.7	93.3		6.12	6.16		7.55	7.57		3	

Remarks:  
Single underline denotes exceedance over Action Level.  
Double underline denotes exceedance over Limit Level.



**Water Monitoring Result at P5 - WCT / RT / IT  
Mid-Flood Tide**

Date	Time	Weather Condition	Sampling Depth		Water Temperature			pH			Salinity			DO Saturation		DO		Turbidity		Suspended Solids				
			m		°C		-		ppt		%		mg/L		NTU		mg/L							
					Value	Average	Value	Average	Value	Average	Value	Average	Value	Average	Value	Average	Value	Average						
27/4/18	10:30	Cloudy	Middle	2.5	23.70	23.70	23.75	8.19	8.19	8.19	32.79	32.79	32.80	83.1	83.3	83.0	5.93	5.84	5.84	9.86	9.85	9.88	2	2.00
	10:32		Middle	2.5	23.80	23.80		8.19	8.19		32.80	32.80		82.9	82.5		5.81	5.78		9.87	9.92		2	
30/4/18	19:24	Fine	Middle	3.0	25.20	25.20	25.20	8.04	8.04	8.04	32.51	32.51	32.51	77.4	77.5	76.9	5.20	5.21	5.17	6.58	6.44	6.42	9	8.50
	19:25		Middle	3.0	25.20	25.20		8.04	8.04		32.51	32.51		75.1	77.5		5.05	5.21		6.38	6.29		8	
2/5/18	21:37	Cloudy	Middle	3.0	23.60	23.60	23.60	8.07	8.07	8.07	32.39	32.39	32.39	78.5	78.2	78.3	5.25	5.23	5.24	2.20	2.25	2.22	9	8.50
	21:38		Middle	3.0	23.60	23.60		8.07	8.07		32.39	32.39		78.8	77.7		5.27	5.19		2.27	2.15		8	
4/5/18	10:00	Fine	Middle	3.0	24.30	24.30	24.30	8.29	8.29	8.29	32.84	32.84	32.84	87.2	87.7	86.9	6.05	6.08	6.03	8.69	8.60	8.66	10	11.00
	10:02		Middle	3.0	24.30	24.30		8.29	8.29		32.84	32.84		86.1	86.6		5.97	6.00		8.64	8.70		12	
7/5/18	4:59	Cloudy	Middle	3.0	25.70	25.70	25.70	8.13	8.13	8.13	32.90	32.90	32.90	74.3	76.6	75.7	5.03	5.19	5.13	1.43	1.15	1.28	5	4.50
	5:00		Middle	3.0	25.70	25.70		8.13	8.13		32.90	32.90		76.7	75.1		5.20	5.09		1.35	1.17		4	
10/5/18	0:23	Cloudy	Middle	3.5	23.30	23.30	23.30	8.17	8.17	8.17	33.05	33.05	33.05	75.9	77.1	75.6	5.35	5.41	5.32	3.55	3.61	3.52	9	8.50
	0:24		Middle	3.5	23.30	23.30		8.17	8.17		33.05	33.05		74.6	74.6		5.26	5.26		3.43	3.50		8	
12/5/18	14:45	Fine	Middle	2.5	25.90	25.90	25.95	8.20	8.20	8.20	32.46	32.46	32.46	85.4	85.0	85.2	5.77	5.75	5.76	8.67	8.66	8.65	5	5.50
	14:47		Middle	2.5	26.00	26.00		8.20	8.20		32.46	32.46		85.2	85.3		5.76	5.76		8.64	8.62		6	
14/5/18	15:50	Fine	Middle	2.5	27.70	27.70	27.75	8.19	8.19	8.19	30.99	30.99	30.99	80.4	80.2	80.5	5.32	5.30	5.32	9.24	9.32	9.29	14	13.50
	15:52		Middle	2.5	27.80	27.80		8.19	8.19		30.98	30.98		80.5	80.7		5.32	5.33		9.32	9.26		13	
16/5/18	19:21	Fine	Middle	2.5	27.30	27.30	27.30	8.11	8.11	8.11	30.63	30.63	30.63	79.3	79.9	79.0	5.30	5.34	5.29	6.02	5.61	5.83	10	9.00
	19:22		Middle	2.5	27.30	27.30		8.11	8.11		30.63	30.63		78.3	78.5		5.24	5.26		5.79	5.88		8	
19/5/18	10:20	Fine	Middle	3.0	27.40	27.40	27.45	8.20	8.20	8.20	30.05	30.05	30.05	79.0	79.1	79.1	5.28	5.29	5.28	8.16	8.17	8.16	4	3.00
	10:22		Middle	3.0	27.50	27.50		8.20	8.20		30.05	30.05		78.9	79.3		5.27	5.29		8.16	8.16		2	
21/5/18	11:45	Fine	Middle	3.0	27.40	27.40	27.45	8.22	8.22	8.22	30.38	30.38	30.38	79.7	80.0	79.1	5.31	5.33	5.27	8.29	8.28	8.31	3	2.50
	11:47		Middle	3.0	27.50	27.50		8.22	8.22		30.38	30.38		78.8	78.0		5.25	5.20		8.31	8.37		2	
23/5/18	15:45	Fine	Middle	3.0	28.70	28.70	28.80	8.32	8.32	8.32	29.98	29.98	29.98	90.0	90.5	90.4	5.88	5.91	5.90	8.40	8.41	8.44	4	5.00
	15:47		Middle	3.0	28.90	28.90		8.31	8.31		29.98	29.98		90.6	90.4		5.92	5.90		8.46	8.48		6	
25/5/18	14:10	Fine	Middle	2.5	28.30	28.30	28.35	8.41	8.41	8.41	29.44	29.44	29.44	94.3	93.6	94.0	6.23	6.18	6.21	8.31	8.30	8.32	5	4.50
	14:12		Middle	2.5	28.40	28.40		8.40	8.40		29.44	29.44		93.9	94.1		6.20	6.21		8.31	8.34		4	

Remarks:  
Single underline denotes exceedance over Action Level.  
Double underline denotes exceedance over Limit Level.



**Water Monitoring Result at RW21-P789 - GEC/CRB/SHK  
Mid-Flood Tide**

Date	Time	Weather Condition	Sampling Depth		Water Temperature			pH			Salinity		DO Saturation		DO		Turbidity		Suspended Solids					
					°C		-		ppt		%		mg/L		NTU		mg/L							
			m	Value	Average	Value	Average	Value	Average	Value	Average	Value	Average	Value	Average	Value	Average	Value	Average					
27/4/18	10:45	Cloudy	Middle	3.5	24.00	24.00	24.05	8.18	8.18	8.18	32.77	32.77	32.77	85.1	85.0	84.7	5.93	5.92	5.90	6.81	6.90	6.86	3	4.00
	10:47		Middle	3.5	24.10	24.10		8.18	8.18		32.77	32.77		84.5	84.3		5.87	5.87		6.86	6.87		5	
30/4/18	17:15	Fine	Middle	3.5	25.20	25.20	25.20	7.90	7.90	7.90	32.28	32.28	32.28	79.6	80.9	78.5	5.37	5.45	5.29	2.74	2.62	2.49	5	6.00
	17:16		Middle	3.5	25.20	25.20		7.90	7.90		32.28	32.28		77.1	76.2		5.20	5.13		2.24	2.37		7	
2/5/18	21:55	Cloudy	Middle	4.0	24.10	24.10	24.10	7.97	7.97	7.97	32.24	32.24	32.24	79.3	81.9	80.7	5.26	5.43	5.36	1.22	1.85	1.52	5	6.00
	21:56		Middle	4.0	24.10	24.10		7.97	7.97		32.24	32.24		81.3	80.3		5.40	5.33		1.58	1.41		7	
4/5/18	7:40	Fine	Middle	4.0	24.60	24.60	24.60	7.95	7.95	7.96	32.95	32.95	32.96	86.1	86.5	86.0	5.94	5.97	5.93	8.51	8.50	8.53	9	9.50
	7:42		Middle	4.0	24.60	24.60		7.96	7.96		32.96	32.96		85.5	85.7		5.89	5.90		8.54	8.57		10	
7/5/18	5:24	Cloudy	Middle	4.0	25.40	25.40	25.40	8.13	8.13	8.13	32.84	32.84	32.84	77.3	78.4	78.4	5.26	5.34	5.34	1.21	1.19	1.17	5	4.50
	5:26		Middle	4.0	25.40	25.40		8.13	8.13		32.84	32.84		78.6	79.3		5.37	5.40		1.15	1.14		4	
10/5/18	0:23	Cloudy	Middle	3.5	23.30	23.30	23.30	8.17	8.17	8.17	33.05	33.05	33.05	75.9	77.1	75.6	5.35	5.41	5.32	3.55	3.61	3.52	8	6.00
	0:24		Middle	3.5	23.30	23.30		8.17	8.17		33.05	33.05		74.6	74.6		5.26	5.26		3.43	3.50		4	
12/5/18	15:06	Fine	Middle	3.5	26.00	26.00	26.10	8.21	8.21	8.21	32.62	32.62	32.62	86.0	85.4	85.6	5.80	5.75	5.76	8.13	8.09	8.07	4	3.50
	15:07		Middle	3.5	26.20	26.20		8.21	8.21		32.61	32.61		85.5	85.3		5.76	5.74		8.02	8.02		3	
14/5/18	16:15	Fine	Middle	4.0	27.10	27.10	27.15	8.21	8.21	8.21	31.53	31.53	31.53	80.3	80.3	80.1	5.34	5.34	5.33	9.62	9.61	9.60	15	14.00
	16:17		Middle	4.0	27.20	27.20		8.20	8.20		31.53	31.53		79.7	80.0		5.30	5.32		9.59	9.58		13	
16/5/18	19:40	Fine	Middle	4.0	27.40	27.40	27.40	8.07	8.07	8.07	30.81	30.81	30.81	76.4	75.6	76.0	5.08	5.03	5.06	4.72	4.52	4.53	10	9.50
	19:41		Middle	4.0	27.40	27.40		8.07	8.07		30.81	30.81		75.3	76.8		5.01	5.11		4.14	4.73		9	
19/5/18	7:50	Fine	Middle	4.0	27.20	27.20	27.25	8.13	8.13	8.15	30.30	30.30	30.30	78.4	78.4	78.3	5.24	5.24	5.23	8.47	8.44	8.44	5	4.50
	7:52		Middle	4.0	27.30	27.30		8.16	8.16		30.30	30.30		77.9	78.5		5.20	5.24		8.42	8.41		4	
21/5/18	12:00	Fine	Middle	4.0	27.50	27.50	27.60	8.21	8.21	8.21	30.62	30.62	30.62	81.7	81.5	81.6	5.42	5.41	5.43	8.36	8.30	8.31	2	2.50
	12:02		Middle	4.0	27.70	27.70		8.21	8.21		30.61	30.61		81.9	81.3		5.44	5.46		8.28	8.28		3	
23/5/18	11:00	Fine	Middle	4.0	29.50	29.50	29.70	8.16	8.16	8.18	30.41	30.41	30.41	84.5	85.1	84.5	5.43	5.46	5.42	8.08	8.08	8.05	10	9.50
	11:02		Middle	4.0	29.90	29.90		8.19	8.19		30.40	30.40		84.5	84.0		5.41	5.38		8.03	8.00		9	
25/5/18	14:35	Fine	Middle	3.5	28.60	28.60	28.65	8.33	8.33	8.33	29.75	29.75	29.75	89.7	89.6	89.2	5.89	5.88	5.85	8.43	8.38	8.40	4	4.00
	14:37		Middle	3.5	28.70	28.70		8.32	8.32		29.75	29.75		88.6	88.7		5.81	5.82		8.39	8.39		4	

Remarks:  
Single underline denotes exceedance over Action Level.  
Double underline denotes exceedance over Limit Level.



**Water Monitoring Result at WSD19 - Sheung Wan  
Mid-Flood Tide**

Date	Time	Weather Condition	Sampling Depth		Water Temperature			pH			Salinity		DO Saturation		DO		Turbidity		Suspended Solids					
					°C			-			ppt		%		mg/L		NTU		mg/L					
			m	Value	Average	Value	Average	Value	Average	Value	Average	Value	Average	Value	Average	Value	Average	Value	Average	Value	Average			
27/4/18	12:05	Cloudy	Middle	3.5	25.00	24.90	24.95	8.12	8.12	8.13	32.59	32.59	32.59	76.7	77.3	77.2	5.27	5.31	5.30	16.13	16.12	16.12	9	8.00
	12:07		Middle	3.5	24.90	25.00		8.13	8.13		32.59	32.59		77.2	77.4		5.30	5.31		16.11	16.10		7	
30/4/18	18:00	Fine	Middle	3.5	25.00	25.00	25.00	7.87	7.87	7.87	31.32	31.32	31.32	76.7	78.0	77.2	5.22	5.30	5.25	3.88	4.05	3.76	8	8.50
	18:01		Middle	3.5	25.00	25.00		7.87	7.87		31.32	31.32		77.2	76.9		5.25	5.24		3.33	3.79		9	
2/5/18	20:00	Cloudy	Middle	3.5	24.00	24.00	24.00	8.04	8.04	8.04	32.19	32.19	32.19	80.3	82.0	81.4	5.35	5.46	5.41	2.44	2.10	2.21	8	8.50
	20:01		Middle	3.5	24.00	24.00		8.04	8.04		32.19	32.19		81.2	82.1		5.37	5.46		2.12	2.18		9	
4/5/18	8:30	Fine	Middle	4.0	24.90	24.90	24.95	8.18	8.18	8.20	32.59	32.59	32.59	87.5	87.0	86.8	6.01	5.98	5.96	9.75	9.68	9.70	15	14.50
	8:32		Middle	4.0	25.00	25.00		8.21	8.21		32.58	32.58		86.3	86.4		5.92	5.93		9.68	9.67		14	
7/5/18	3:30	Cloudy	Middle	3.5	25.50	25.50	25.50	8.09	8.09	8.09	32.27	32.27	32.27	74.1	75.5	74.8	5.05	5.17	5.11	1.10	1.08	1.07	2	4.50
	3:31		Middle	3.5	25.50	25.50		8.10	8.10		32.27	32.27		75.6	74.0		5.15	5.05		1.06	1.04		7	
10/5/18	1:45	Cloudy	Middle	3.5	23.30	23.30	23.30	8.12	8.12	8.12	32.76	32.76	32.76	77.2	78.3	77.2	5.45	5.50	5.43	4.23	4.18	4.15	6	5.50
	1:46		Middle	3.5	23.30	23.30		8.12	8.12		32.76	32.76		76.6	76.5		5.38	5.40		4.09	4.11		5	
12/5/18	16:15	Fine	Middle	4.0	26.40	26.40	26.55	8.07	8.07	8.10	32.51	32.51	32.51	83.8	83.9	83.5	5.59	5.60	5.57	8.80	8.81	8.80	7	6.50
	16:17		Middle	4.0	26.70	26.70		8.12	8.12		32.51	32.51		83.2	83.1		5.54	5.54		8.80	8.80		6	
14/5/18	17:55	Fine	Middle	4.0	27.00	27.00	27.20	8.11	8.11	8.13	31.55	31.55	31.54	84.5	84.5	84.4	5.61	5.61	5.60	15.60	15.62	15.61	15	14.50
	17:57		Middle	4.0	27.40	27.40		8.15	8.15		31.53	31.53		84.3	84.4		5.58	5.58		15.61	15.62		14	
16/5/18	17:30	Fine	Middle	3.5	27.10	27.10	27.13	8.07	8.07	8.07	30.23	30.23	30.23	79.2	79.4	79.1	5.30	5.31	5.29	11.97	10.62	11.29	11	11.50
	17:31		Middle	3.5	27.20	27.10		8.07	8.07		30.23	30.23		78.9	78.8		5.28	5.28		12.05	10.50		12	
19/5/18	9:10	Fine	Middle	4.0	27.50	27.50	27.55	8.15	8.15	8.16	30.20	30.20	30.20	81.1	82.4	81.7	5.40	5.49	5.44	9.92	9.90	9.90	4	4.00
	9:12		Middle	4.0	27.60	27.60		8.16	8.16		30.20	30.20		81.7	81.7		5.44	5.43		9.88	9.88		4	
21/5/18	10:30	Fine	Middle	4.0	28.40	28.40	28.50	8.13	8.13	8.14	29.48	29.48	29.48	78.7	79.1	78.9	5.18	5.21	5.19	8.12	8.13	8.11	2	3.00
	10:32		Middle	4.0	28.60	28.60		8.15	8.15		29.48	29.48		78.9	79.0		5.19	5.19		8.10	8.09		4	
23/5/18	13:00	Fine	Middle	4.0	29.70	29.70	29.70	8.30	8.30	8.29	29.26	29.26	29.26	86.2	85.7	86.9	5.59	5.55	6.37	8.59	8.58	8.59	4	5.00
	13:02		Middle	4.0	29.70	29.70		8.28	8.28		29.25	29.25		87.6	88.1		5.66	8.69		8.58	8.59		6	
25/5/18	15:05	Fine	Middle	4.0	29.40	29.40	29.20	8.35	8.35	8.37	29.32	29.32	29.32	102.9	102.6	102.3	6.67	6.65	6.63	8.23	8.25	8.26	6	6.00
	15:07		Middle	4.0	29.00	29.00		8.38	8.38		29.31	29.31		102.1	101.7		6.61	6.58		8.28	8.27		6	

Remarks:  
Single underline denotes exceedance over Action Level.  
Double underline denotes exceedance over Limit Level.





**Water Monitoring Result at C7 - Windsor House  
Mid-Ebb Tide**

Date	Time	Weather Condition	Sampling Depth		Water Temperature		pH			Salinity			DO Saturation		DO		Turbidity		Suspended Solids					
					°C		-			ppt			%		mg/L		NTU		mg/L					
					Value	Average	Value	Average	Value	Average	Value	Average	Value	Average	Value	Average	Value	Average	Value	Average				
27/4/18	16:30	Cloudy	Middle	-	25.40	25.40	25.50	8.14	8.14	8.15	32.44	32.44	32.44	82.4	82.2	82.2	5.61	5.59	5.58	8.34	8.26	8.27	5	6.00
	16:32		Middle	-	25.60	25.60		8.16	8.16		32.44	32.44		81.7	82.4		5.55	5.56		8.23	8.25		7	
30/4/18	13:35	Cloudy	Middle	-	25.40	25.40	25.50	8.15	8.15	8.15	32.23	32.23	32.23	84.1	84.3	83.9	5.73	5.74	5.71	9.06	9.04	9.02	9	10.00
	13:37		Middle	-	25.60	25.60		8.15	8.15		32.22	32.22		83.3	83.7		5.67	5.70		9.02	9.02		11	
2/5/18	14:55	Fine	Middle	-	27.20	27.20	27.30	8.14	8.14	8.14	31.60	31.60	31.60	86.9	86.8	86.8	5.77	5.76	5.75	9.72	9.68	9.69	8	7.00
	14:57		Middle	-	27.40	27.40		8.14	8.14		31.59	31.59		86.6	86.7		5.74	5.72		9.69	9.68		6	
4/5/18	14:00	Cloudy	Middle	-	25.30	25.30	25.30	8.22	8.22	8.22	32.56	32.56	32.58	83.3	84.1	83.8	5.68	5.74	5.72	6.79	6.84	6.81	8	9.00
	14:02		Middle	-	25.30	25.30		8.22	8.22		32.60	32.60		84.0	83.9		5.73	5.72		6.82	6.80		10	
7/5/18	16:35	Cloudy	Middle	-	26.70	26.70	26.75	8.28	8.28	8.28	32.09	32.09	32.07	88.5	89.5	88.7	5.91	5.98	5.92	8.60	8.59	8.62	8	7.00
	16:37		Middle	-	26.80	26.80		8.28	8.28		32.05	32.05		88.2	88.6		5.89	5.91		8.64	8.64		6	
9/5/18	20:30	Cloudy	Middle	-	23.30	23.30	23.30	8.15	8.15	8.15	32.34	32.34	32.34	79.6	80.9	79.6	5.55	5.73	5.62	2.80	2.23	2.43	5	5.50
	20:31		Middle	-	23.30	23.30		8.15	8.15		32.34	32.34		79.3	78.4		5.61	5.57		2.51	2.18		6	
12/5/18	8:50	Cloudy	Middle	-	25.40	25.40	25.45	8.18	8.18	8.18	32.91	32.91	32.91	78.3	78.4	78.2	5.33	5.34	5.32	9.43	9.44	9.47	7	6.50
	8:52		Middle	-	25.50	25.50		8.18	8.18		32.90	32.90		77.8	78.1		5.29	5.31		9.51	9.50		6	
14/5/18	11:30	Fine	Middle	-	26.30	26.30	26.40	8.20	8.20	8.20	32.20	32.20	32.20	84.0	84.0	83.6	5.65	5.65	5.62	9.37	9.37	9.39	9	9.50
	11:32		Middle	-	26.50	26.50		8.20	8.20		32.19	32.19		83.1	83.4		5.57	5.60		9.40	9.40		10	
16/5/18	12:10	Fine	Middle	-	27.60	27.60	27.65	8.19	8.19	8.19	30.26	30.26	30.26	83.6	83.9	83.7	5.56	5.57	5.56	9.03	9.05	9.06	11	12.00
	12:12		Middle	-	27.70	27.70		8.18	8.18		30.26	30.26		83.5	83.8		5.55	5.56		9.09	9.07		13	
19/5/18	15:40	Fine	Middle	2	28.40	28.40	28.40	8.16	8.16	8.16	28.87	28.87	28.98	72.6	72.5	72.5	4.81	4.80	4.79	7.74	7.74	7.70	2	2.00
	15:42		Middle	2	28.40	28.40		8.16	8.16		29.09	29.09		72.4	72.4		4.78	4.77		7.68	7.62		<2	
21/5/18	18:15	Fine	Middle	2	28.70	28.70	28.80	8.21	8.21	8.21	29.50	29.50	29.50	82.9	83.3	82.9	5.44	5.46	5.43	6.41	6.36	6.37	2	2.00
	18:17		Middle	2	28.90	28.90		8.21	8.21		29.50	29.50		82.7	82.8		5.41	5.42		6.37	6.35		<2	
23/5/18	21:00	Fine	Middle	2	27.50	27.50	27.50	8.14	8.14	8.14	29.67	29.67	29.57	77.4	78.0	78.1	5.18	5.22	5.23	1.96	1.33	1.54	2	3.50
	21:01		Middle	2	27.50	27.50		8.14	8.14		29.47	29.47		78.6	78.4		5.26	5.25		1.45	1.42		5	
25/5/18	8:15	Fine	Middle	2	28.20	28.20	28.30	8.26	8.26	8.28	29.66	29.66	29.66	88.6	88.7	87.9	5.84	5.85	5.80	5.65	5.65	5.66	5	4.50
	8:17		Middle	2	28.40	28.40		8.29	8.29		29.65	29.65		87.0	87.3		5.74	5.75		5.66	5.68		4	

Remarks:  
Single underline denotes exceedance over Action Level.  
Double underline denotes exceedance over Limit Level.



**Water Monitoring Result at C1 - HKCEC  
Mid-Ebb Tide**

Date	Time	Weather Condition	Sampling Depth		Water Temperature			pH			Salinity			DO Saturation		DO		Turbidity		Suspended Solids				
					°C		-		ppt		%		mg/L		NTU		mg/L							
					Value	Average	Value	Average	Value	Average	Value	Average	Value	Average	Value	Average	Value	Average	Value	Average				
27/4/18	15:20	Cloudy	Middle	2.5	25.20	25.20	24.80	8.17	8.17	8.17	32.31	32.31	32.31	81.7	82.1	82.0	5.59	5.62	5.61	8.08	8.09	8.04	5	4.50
	15:22		Middle	2.5	25.30	23.50		8.17	8.17		32.31	32.31		82.1	82.1		5.62	5.62		8.00	7.98		4	
30/4/18	12:20	Cloudy	Middle	2.5	24.90	24.90	24.95	8.15	8.15	8.15	32.22	32.22	32.22	86.0	86.0	86.0	5.92	5.92	5.92	8.08	8.08	8.06	6	6.50
	12:22		Middle	2.5	25.00	25.00		8.15	8.15		32.22	32.22		86.0	85.8		5.92	5.90		8.04	8.03		7	
2/5/18	13:55	Fine	Middle	2.5	26.00	26.00	26.05	8.18	8.18	8.18	31.83	31.83	31.83	82.1	82.1	81.8	5.56	5.56	5.54	8.28	8.27	8.30	4	5.00
	13:57		Middle	2.5	26.10	26.10		8.17	8.17		31.83	31.83		81.3	81.7		5.51	5.53		8.33	8.30		6	
4/5/18	13:20	Cloudy	Middle	3.0	24.30	24.30	24.30	8.31	8.31	8.31	32.90	32.90	32.90	84.8	85.5	85.3	5.95	5.93	5.95	8.39	8.39	8.39	8	7.50
	13:22		Middle	3.0	24.30	24.30		8.30	8.30		32.89	32.89		85.9	84.8		5.96	5.95		8.39	8.38		7	
7/5/18	15:35	Cloudy	Middle	3.0	26.60	26.60	26.60	8.32	8.32	8.32	32.09	32.09	32.09	90.3	90.5	90.0	5.05	6.06	5.79	7.86	7.88	7.84	5	4.50
	15:37		Middle	3.0	26.60	26.60		8.32	8.32		32.09	32.09		89.9	89.2		6.02	6.04		7.76	7.84		4	
9/5/18	19:47	Cloudy	Middle	3.0	23.50	23.50	23.50	8.21	8.21	8.21	33.18	33.18	33.18	76.7	76.3	74.9	5.39	5.36	5.26	3.26	3.15	3.20	4	4.50
	19:48		Middle	3.0	23.50	23.50		8.21	8.21		33.18	33.18		72.0	74.4		5.06	5.23		3.27	3.10		5	
12/5/18	10:55	Cloudy	Middle	2.5	25.00	25.00	25.00	8.28	8.28	8.28	32.93	32.93	32.93	82.1	82.2	82.1	5.62	5.63	5.62	8.49	8.47	8.48	4	5.00
	10:57		Middle	2.5	25.00	25.00		8.28	8.28		32.93	32.93		81.7	82.4		5.59	5.65		8.45	8.49		6	
14/5/18	11:05	Fine	Middle	2.5	26.40	26.40	26.40	8.19	8.19	8.19	31.55	31.55	31.55	81.9	82.1	81.9	5.52	5.54	5.52	8.59	8.59	8.58	6	6.00
	11:07		Middle	2.5	26.40	26.40		8.19	8.19		31.55	31.55		81.8	81.6		5.52	5.50		8.60	8.55		6	
16/5/18	11:30	Fine	Middle	3.0	27.20	27.20	27.20	8.18	8.18	8.18	30.15	30.15	30.15	83.1	83.5	83.2	5.57	5.59	5.57	8.81	8.80	8.81	6	6.50
	11:32		Middle	3.0	27.20	27.20		8.18	8.18		30.15	30.15		82.9	83.3		5.55	5.58		8.80	8.81		7	
19/5/18	15:05	Fine	Middle	3.0	28.00	28.00	28.00	8.21	8.21	8.21	28.93	28.93	28.94	84.5	84.2	83.9	5.62	5.61	5.59	8.70	8.71	8.75	3	4.00
	15:07		Middle	3.0	28.00	28.00		8.21	8.21		28.95	28.95		83.7	83.3		5.57	5.55		8.81	8.78		5	
21/5/18	16:20	Fine	Middle	3.0	28.40	28.40	28.40	8.23	8.23	8.23	29.33	29.33	29.34	85.7	86.1	85.7	5.66	5.69	5.66	8.36	8.36	8.36	<2	<2
	16:22		Middle	3.0	28.40	28.40		8.23	8.23		29.34	29.34		85.2	85.8		5.62	5.66		8.37	8.36		<2	
23/5/18	20:20	Fine	Middle	2.5	28.00	28.00	28.00	8.21	8.21	8.21	29.81	29.81	29.81	78.3	79.1	79.0	5.20	5.25	5.25	1.05	1.22	1.16	5	5.50
	20:21		Middle	2.5	28.00	28.00		8.21	8.21		29.81	29.81		79.3	79.2		5.27	5.26		1.00	1.36		6	
25/5/18	10:00	Fine	Middle	2.5	28.40	28.40	28.40	8.33	8.33	8.33	29.71	29.71	29.71	89.0	88.8	88.9	5.89	5.85	5.87	8.06	8.07	8.09	4	4.00
	10:02		Middle	2.5	28.40	28.40		8.33	8.33		29.71	29.71		88.5	89.1		5.83	5.89		8.08	8.13		4	

Remarks:  
Single underline denotes exceedance over Action Level.  
Double underline denotes exceedance over Limit Level.



**Water Monitoring Result at P1 - HKCEC Phase I  
Mid-Ebb Tide**

Date	Time	Weather Condition	Sampling Depth		Water Temperature			pH			Salinity			DO Saturation		DO		Turbidity		Suspended Solids				
					°C		-		ppt		%		mg/L		NTU		mg/L							
			m	Value	Average	Value	Average	Value	Average	Value	Average	Value	Average	Value	Average	Value	Average	Value	Average					
27/4/18	15:00	Cloudy	Middle	2.5	25.70	25.70	25.80	8.14	8.14	8.14	32.38	32.38	32.39	85.6	85.5	85.1	5.80	5.79	5.76	6.60	6.59	6.62	6	7.00
	15:02		Middle	2.5	25.90	25.90		8.14	8.14		32.39	32.39		84.8	84.6		5.74	5.72		6.61	6.66		8	
30/4/18	12:00	Cloudy	Middle	2.5	25.80	25.80	25.95	8.10	8.10	8.11	32.34	32.34	32.35	87.5	87.8	87.4	5.91	5.93	5.90	7.97	7.93	7.89	5	4.00
	12:02		Middle	2.5	26.10	26.10		8.11	8.11		32.35	32.35		86.8	87.6		5.86	5.91		7.84	7.80		3	
2/5/18	13:30	Fine	Middle	2.5	28.20	28.20	28.35	8.23	8.23	8.22	32.01	32.01	32.01	83.2	83.6	83.7	5.42	5.66	5.49	9.44	9.42	9.42	6	7.00
	13:32		Middle	2.5	28.50	28.50		8.21	8.21		32.00	32.00		84.1	83.9		5.46	5.43		9.41	9.42		8	
4/5/18	13:00	Cloudy	Middle	3.0	24.60	24.60	24.65	8.30	8.30	8.30	32.95	32.95	32.95	83.9	88.0	86.8	6.03	6.04	6.05	8.08	8.08	8.08	7	6.50
	13:02		Middle	3.0	24.70	24.70		8.30	8.30		32.95	32.95		87.7	87.6		6.07	6.06		8.08	8.09		6	
7/5/18	15:15	Cloudy	Middle	3.0	27.40	27.40	27.40	8.28	8.28	8.29	31.95	31.95	31.95	92.5	92.6	92.4	6.12	6.13	6.12	7.83	7.83	7.80	6	7.00
	15:17		Middle	3.0	27.40	27.40		8.29	8.29		31.95	31.95		92.2	92.4		6.10	6.11		7.79	7.74		8	
9/5/18	19:15	Cloudy	Middle	3.0	23.40	23.40	23.40	8.20	8.20	8.20	32.91	32.91	32.91	75.9	78.5	77.3	5.35	5.54	5.45	3.52	3.38	3.34	7	6.00
	19:16		Middle	3.0	23.40	23.40		8.20	8.20		32.91	32.91		77.8	76.8		5.48	5.41		3.19	3.26		5	
12/5/18	10:35	Cloudy	Middle	2.5	25.60	25.60	25.65	8.26	8.26	8.27	32.90	32.90	32.90	84.0	85.2	84.9	5.69	5.77	5.75	8.18	8.18	8.18	4	5.00
	10:37		Middle	2.5	25.70	25.70		8.27	8.27		32.90	32.90		84.7	85.6		5.74	5.79		8.18	8.18		6	
14/5/18	10:45	Fine	Middle	2.5	27.90	27.90	28.05	8.13	8.13	8.14	31.71	31.71	31.72	86.5	86.3	86.1	5.67	5.65	5.64	8.80	8.75	8.78	8	8.50
	10:47		Middle	2.5	28.20	28.20		8.15	8.15		31.72	31.72		86.0	85.7		5.62	5.60		8.77	8.78		9	
16/5/18	11:10	Fine	Middle	3.0	28.30	28.30	28.40	8.03	8.03	8.06	30.59	30.59	30.60	84.8	84.8	84.0	5.56	5.56	5.50	8.98	8.97	8.97	10	10.00
	11:12		Middle	3.0	28.50	28.50		8.08	8.08		30.60	30.60		82.3	83.9		5.39	5.48		8.96	8.95		10	
19/5/18	14:45	Fine	Middle	3.0	29.20	29.20	29.40	8.13	8.13	8.15	29.15	29.15	29.15	87.1	87.4	86.8	5.65	5.66	5.62	8.93	8.96	8.93	2	2.00
	14:47		Middle	3.0	29.60	29.60		8.16	8.16		29.14	29.14		86.4	86.4		5.59	5.59		8.92	8.91		2	
21/5/18	16:00	Fine	Middle	3.0	29.50	29.50	29.60	8.32	8.32	8.30	29.67	29.67	29.67	85.4	85.8	85.6	5.52	5.54	5.52	8.60	8.67	8.63	<2	<2
	16:02		Middle	3.0	29.70	29.70		8.28	8.28		29.67	29.67		85.7	85.5		5.52	5.51		8.65	8.61		<2	
23/5/18	19:50	Fine	Middle	2.5	27.90	27.90	27.90	8.24	8.24	8.24	29.75	29.75	29.75	77.0	78.6	77.2	5.12	5.22	5.13	1.40	1.17	1.24	4	4.50
	19:51		Middle	2.5	27.90	27.90		8.24	8.24		29.75	29.75		76.9	76.3		5.11	5.07		1.29	1.10		5	
25/5/18	9:40	Fine	Middle	2.5	28.20	28.20	28.20	8.35	8.35	8.35	29.75	29.75	29.75	88.9	89.0	88.6	5.88	5.89	5.86	6.65	6.59	6.62	4	4.50
	9:42		Middle	2.5	28.20	28.20		8.35	8.35		29.75	29.75		88.6	88.0		5.86	5.81		6.66	6.57		5	

Remarks:  
Single underline denotes exceedance over Action Level.  
Double underline denotes exceedance over Limit Level.



**Water Monitoring Result at P3 - APA  
Mid-Ebb Tide**

Date	Time	Weather Condition	Sampling Depth		Water Temperature			pH			Salinity			DO Saturation		DO		Turbidity		Suspended Solids				
					°C			-			ppt			%		mg/L		NTU		mg/L				
					Value	Average		Value	Average		Value	Average		Value	Average		Value	Average	Value	Average	Value	Average	Value	Average
27/4/18	15:05	Cloudy	Middle	2.5	25.20	25.20	25.20	8.16	8.16	8.16	32.30	32.30	32.30	84.3	84.4	84.5	5.78	5.79	5.79	6.44	6.43	6.40	6	6.00
	15:07		Middle	2.5	25.20	25.20		8.16	8.16		32.29	32.29		84.6	84.6		5.79	5.79		6.38	6.36		6	
30/4/18	12:05	Cloudy	Middle	2.5	25.00	25.00	25.05	8.13	8.13	8.13	32.24	32.24	32.24	81.3	81.5	81.6	5.58	5.59	5.60	8.19	8.22	8.21	6	5.50
	12:07		Middle	2.5	25.10	25.10		8.13	8.13		32.24	32.24		81.7	81.9		5.60	5.62		8.21	8.20		5	
2/5/18	13:40	Fine	Middle	2.5	26.90	26.90	26.95	8.18	8.18	8.18	31.82	31.82	31.82	82.6	82.4	82.6	5.51	5.50	5.51	8.33	8.35	8.34	3	3.00
	13:42		Middle	2.5	27.00	27.00		8.18	8.18		31.82	31.82		82.5	82.7		5.50	5.51		8.34	8.34		3	
4/5/18	13:05	Cloudy	Middle	3.0	24.30	24.30	24.30	8.31	8.31	8.31	32.90	32.90	32.90	86.2	87.0	87.0	5.98	6.00	6.03	8.07	8.03	8.04	6	6.00
	13:07		Middle	3.0	24.30	24.30		8.31	8.31		32.90	32.90		87.2	87.6		6.05	6.07		8.03	8.02		6	
7/5/18	15:20	Cloudy	Middle	3.0	27.10	27.10	27.15	8.31	8.31	8.31	31.94	31.94	31.94	90.9	91.1	90.3	6.04	6.05	6.00	7.25	7.21	7.22	7	7.50
	15:22		Middle	3.0	27.20	27.20		8.31	8.31		31.94	31.94		89.3	89.9		5.93	5.97		7.21	7.20		8	
9/5/18	19:23	Cloudy	Middle	3.0	23.50	23.50	23.50	8.20	8.20	8.20	33.00	33.00	33.00	75.3	77.7	76.2	5.30	5.47	5.36	2.78	2.60	2.69	6	6.00
	19:24		Middle	3.0	23.50	23.50		8.20	8.20		33.00	33.00		74.5	77.2		5.24	5.43		2.68	2.69		6	
12/5/18	10:40	Cloudy	Middle	2.5	25.20	25.20	25.20	8.27	8.27	8.28	32.94	32.94	32.94	85.5	84.2	85.2	5.84	5.75	5.82	8.64	8.63	8.63	4	4.00
	10:42		Middle	2.5	25.20	25.20		8.28	8.28		32.94	32.94		85.3	85.6		5.83	5.84		8.63	8.63		4	
14/5/18	10:50	Fine	Middle	2.5	27.00	27.00	27.05	8.17	8.17	8.17	31.53	31.53	31.54	85.1	84.9	85.0	5.68	5.67	5.67	8.88	8.86	8.82	6	6.50
	10:52		Middle	2.5	27.10	27.10		8.17	8.17		31.55	31.55		85.1	84.9		5.67	5.65		8.80	8.75		7	
16/5/18	11:15	Fine	Middle	3.0	27.40	27.40	27.50	8.14	8.14	8.14	30.21	30.21	30.21	82.7	82.5	82.9	5.51	5.50	5.54	8.75	8.75	8.73	9	8.50
	11:17		Middle	3.0	27.60	27.60		8.14	8.14		30.21	30.21		83.2	83.2		5.58	5.58		8.72	8.71		8	
19/5/18	14:50	Fine	Middle	3.0	28.30	28.30	28.35	8.19	8.19	8.19	29.12	29.12	29.12	85.7	85.9	85.5	5.66	5.68	5.64	8.59	8.57	8.60	<2	<2
	14:52		Middle	3.0	28.40	28.40		8.19	8.19		29.11	29.11		84.9	85.4		5.61	5.62		8.58	8.64		<2	
21/5/18	16:05	Fine	Middle	3.0	29.00	29.00	29.05	8.24	8.24	8.24	29.48	29.48	29.48	85.5	86.6	85.9	5.59	5.65	5.61	8.30	8.28	8.28	<2	<2
	16:07		Middle	3.0	29.10	29.10		8.23	8.23		29.48	29.48		85.7	85.8		5.59	5.60		8.27	8.27		<2	
23/5/18	19:57	Fine	Middle	2.5	28.00	28.00	28.00	8.24	8.24	8.24	29.79	29.79	29.79	77.4	79.1	78.7	5.14	5.25	5.22	1.91	1.18	1.41	5	6.50
	19:58		Middle	2.5	28.00	28.00		8.24	8.24		29.79	29.79		79.6	78.8		5.25	5.23		1.29	1.25		8	
25/5/18	9:45	Fine	Middle	2.5	28.20	28.20	28.10	8.35	8.35	8.36	29.68	29.68	29.71	88.5	88.5	88.5	5.88	5.87	5.87	7.21	7.20	7.20	4	4.50
	9:47		Middle	2.5	28.00	28.00		8.36	8.36		29.73	29.73		88.0	88.9		5.83	5.89		7.19	7.19		5	

Remarks:  
Single underline denotes exceedance over Action Level.  
Double underline denotes exceedance over Limit Level.



**Water Monitoring Result at P4 - SOC  
Mid-Ebb Tide**

Date	Time	Weather Condition	Sampling Depth		Water Temperature			pH			Salinity			DO Saturation		DO		Turbidity		Suspended Solids				
					°C			-			ppt			%		mg/L		NTU		mg/L				
					Value	Average		Value	Average		Value	Average		Value	Average		Value	Average	Value	Average	Value	Average	Value	Average
27/4/18	15:10	Cloudy	Middle	2.5	25.00	25.00	25.05	8.17	8.17	8.17	32.31	32.31	32.31	82.6	82.7	82.6	5.68	5.69	5.68	6.80	6.81	6.81	6	6.00
	15:12		Middle	2.5	25.10	25.10		8.17	8.17		32.31	32.31		82.4	82.6		5.66	5.67		6.81	6.81		6	
30/4/18	12:10	Cloudy	Middle	2.5	24.90	24.90	24.95	8.14	8.14	8.14	32.22	32.22	32.22	32.5	32.3	70.5	5.68	5.67	5.72	8.17	8.16	8.16	6	6.00
	12:12		Middle	2.5	25.00	25.00		8.14	8.14		32.22	32.22		83.5	83.8		5.75	5.77		8.16	8.14		6	
2/5/18	13:45	Fine	Middle	2.5	26.50	26.50	26.55	8.17	8.17	8.17	31.79	31.79	31.79	81.3	82.8	82.3	5.53	5.56	5.54	8.25	8.23	8.25	5	4.50
	13:47		Middle	2.5	26.60	26.60		8.17	8.17		31.79	31.79		82.3	82.7		5.53	5.55		8.25	8.26		4	
4/5/18	13:10	Cloudy	Middle	3.0	24.10	24.10	24.10	8.31	8.31	8.31	32.90	32.90	32.90	87.0	87.2	86.8	6.06	6.07	6.04	8.38	8.42	8.39	10	10.00
	13:12		Middle	3.0	24.10	24.10		8.31	8.31		32.90	32.90		86.5	86.6		6.01	6.02		8.37	8.39		10	
7/5/18	15:25	Cloudy	Middle	3.0	26.80	26.80	26.80	8.31	8.31	8.31	32.02	32.02	32.02	90.8	90.9	90.9	6.07	6.07	6.07	7.54	7.48	7.52	7	6.50
	15:27		Middle	3.0	26.80	26.80		8.31	8.31		32.02	32.02		90.8	91.2		6.06	6.09		7.50	7.54		6	
9/5/18	19:29	Cloudy	Middle	3.0	23.40	23.40	23.40	8.20	8.20	8.20	33.09	33.09	33.09	73.4	76.1	74.8	5.17	5.36	5.27	2.88	2.75	2.70	6	6.50
	19:30		Middle	3.0	23.40	23.40		8.20	8.20		33.09	33.09		75.1	74.7		5.29	5.26		2.49	2.69		7	
12/5/18	10:45	Cloudy	Middle	2.5	25.00	25.00	25.05	8.28	8.28	8.28	32.90	32.90	32.90	82.5	83.1	82.9	5.65	5.68	5.67	8.41	8.40	8.40	6	6.50
	10:47		Middle	2.5	25.10	25.10		8.28	8.28		32.90	32.90		82.6	83.2		5.65	5.69		8.39	8.39		7	
14/5/18	10:55	Fine	Middle	2.5	26.50	26.50	26.55	8.18	8.18	8.18	31.54	31.54	31.54	82.8	83.9	83.5	5.57	5.64	5.61	8.69	8.69	8.69	5	5.50
	10:57		Middle	2.5	26.60	26.60		8.18	8.18		31.54	31.54		83.6	83.6		5.62	5.61		8.68	8.68		6	
16/5/18	11:20	Fine	Middle	3.0	27.30	27.30	27.30	8.16	8.16	8.16	30.18	30.18	30.18	82.8	83.5	83.1	5.54	5.59	5.56	8.29	8.29	8.29	9	8.50
	11:22		Middle	3.0	27.30	27.30		8.16	8.16		30.18	30.18		82.8	83.1		5.54	5.56		8.29	8.29		8	
19/5/18	14:55	Fine	Middle	3.0	28.00	28.00	28.05	8.20	8.20	8.20	29.07	29.07	29.08	85.3	85.4	85.3	5.67	5.68	5.67	8.55	8.55	8.54	<2	2.00
	14:57		Middle	3.0	28.10	28.10		8.20	8.20		29.08	29.08		85.5	85.1		5.68	5.64		8.54	8.50		2	
21/5/18	16:10	Fine	Middle	3.0	28.40	28.40	28.45	8.23	8.23	8.23	29.44	29.44	29.44	83.7	84.4	84.3	5.52	5.56	5.56	8.28	8.24	8.25	<2	<2
	16:12		Middle	3.0	28.50	28.50		8.23	8.23		29.44	29.44		84.2	84.8		5.56	5.59		8.23	8.24		<2	
23/5/18	20:06	Fine	Middle	2.5	28.00	28.00	28.00	8.24	8.24	8.24	29.74	29.74	29.74	79.0	77.7	77.7	5.24	5.16	5.15	1.38	1.16	1.24	4	5.50
	20:07		Middle	2.5	28.00	28.00		8.24	8.24		29.74	29.74		76.5	77.6		5.04	5.15		1.28	1.15		7	
25/5/18	9:50	Fine	Middle	2.5	28.00	28.00	28.00	8.36	8.36	8.36	29.73	29.73	29.73	88.1	87.9	88.0	5.85	5.84	5.84	6.80	6.82	6.81	4	4.00
	9:52		Middle	2.5	28.00	28.00		8.36	8.36		29.73	29.73		87.6	88.3		5.81	5.86		6.82	6.80		4	

Remarks:  
Single underline denotes exceedance over Action Level.  
Double underline denotes exceedance over Limit Level.



**Water Monitoring Result at P5 - WCT / RT / IT  
Mid-Ebb Tide**

Date	Time	Weather Condition	Sampling Depth		Water Temperature		pH			Salinity		DO Saturation		DO		Turbidity		Suspended Solids						
					°C		-			ppt		%		mg/L		NTU		mg/L						
					Value	Average	Value	Average	Value	Average	Value	Average	Value	Average	Value	Average	Value	Average	Value	Average				
27/4/18	15:15	Cloudy	Middle	2.5	24.70	24.70	24.75	8.18	8.18	8.18	32.34	32.34	32.34	80.7	80.7	81.1	5.57	5.57	5.59	6.72	6.80	6.83	6	6.00
	15:17		Middle	2.5	24.80	24.80		8.17	8.17	8.17	32.34	32.34		81.4	81.5		81.4	5.61		5.62	5.61		6.89	
30/4/18	12:15	Cloudy	Middle	2.5	24.80	24.80	24.85	8.14	8.14	8.14	32.21	32.21	32.21	84.1	84.2	84.2	5.80	5.80	5.80	8.23	8.23	8.23	5	5.50
	12:17		Middle	2.5	24.90	24.90		8.15	8.15	8.15	32.21	32.21		84.1	84.2		84.1	5.80		5.81	5.80		8.24	
2/5/18	13:50	Fine	Middle	2.5	26.60	26.60	26.60	8.18	8.18	8.18	31.81	31.81	31.81	84.8	83.3	84.5	5.69	5.72	5.70	8.36	8.43	8.44	7	8.00
	13:52		Middle	2.5	26.60	26.60		8.18	8.18	8.18	31.81	31.81		84.7	85.2		84.7	5.68		5.71	5.68		8.47	
4/5/18	13:15	Cloudy	Middle	3.0	24.20	24.20	24.20	8.31	8.31	8.31	32.90	32.90	32.90	87.5	87.5	87.2	6.08	6.08	6.06	8.41	8.40	8.38	6	6.50
	13:17		Middle	3.0	24.20	24.20		8.31	8.31	8.31	32.90	32.90		87.0	86.7		87.0	6.05		6.02	6.05		8.36	
7/5/18	15:30	Cloudy	Middle	3.0	26.60	26.60	26.65	8.31	8.31	8.31	32.13	32.13	32.14	88.3	88.7	88.5	5.91	5.94	5.92	8.02	8.00	7.98	5	4.50
	15:32		Middle	3.0	26.70	26.70		8.31	8.31	8.31	32.14	32.14		88.5	88.5		88.5	5.92		5.92	5.92		7.95	
9/5/18	19:39	Cloudy	Middle	3.0	23.30	23.30	23.30	8.21	8.21	8.21	33.14	33.14	33.14	77.1	78.7	77.9	5.44	5.55	5.50	3.88	3.47	3.65	8	7.50
	19:40		Middle	3.0	23.30	23.30		8.21	8.21	8.21	33.14	33.14		78.3	77.5		78.3	5.52		5.47	5.52		3.68	
12/5/18	10:50	Cloudy	Middle	2.5	25.10	25.10	25.10	8.28	8.28	8.28	32.93	32.93	32.93	83.2	83.2	83.3	5.69	5.69	5.70	8.87	8.85	8.84	6	6.00
	10:52		Middle	2.5	25.10	25.10		8.28	8.28	8.28	32.92	32.92		83.6	83.0		83.6	5.72		5.68	5.72		8.81	
14/5/18	11:00	Fine	Middle	2.5	26.40	26.40	26.45	8.19	8.19	8.19	31.50	31.50	31.51	85.1	84.2	84.5	5.74	5.68	5.69	8.92	8.96	8.94	10	10.00
	11:02		Middle	2.5	26.50	26.50		8.19	8.19	8.19	31.52	31.52		84.0	84.7		84.0	5.65		5.70	5.65		8.96	
16/5/18	11:25	Fine	Middle	3.0	27.40	27.40	27.45	8.17	8.17	8.17	30.16	30.16	30.16	83.8	82.9	83.4	5.60	5.54	5.57	8.54	8.57	8.60	13	13.50
	11:27		Middle	3.0	27.50	27.50		8.17	8.17	8.17	30.16	30.16		83.4	83.3		83.4	5.57		5.56	5.57		8.64	
19/5/18	15:00	Fine	Middle	3.0	28.20	28.20	28.25	8.20	8.20	8.20	29.02	29.02	29.06	85.2	85.1	85.0	5.65	5.64	5.63	8.61	8.55	8.58	3	3.50
	15:02		Middle	3.0	28.30	28.30		8.20	8.20	8.20	29.09	29.09		84.7	84.9		84.7	5.61		5.62	5.61		8.57	
21/5/18	16:15	Fine	Middle	3.0	28.70	28.70	28.70	8.23	8.23	8.23	29.31	29.31	29.31	86.8	86.5	86.5	5.70	5.69	5.69	8.85	8.90	8.89	<2	<2
	16:17		Middle	3.0	28.70	28.70		8.23	8.23	8.23	29.31	29.31		86.2	86.6		86.2	5.66		5.69	5.66		8.91	
23/5/18	20:13	Fine	Middle	2.5	28.00	28.00	28.00	8.23	8.23	8.23	29.79	29.79	29.79	75.5	77.3	77.0	5.01	5.13	5.11	1.40	1.29	1.28	5	6.00
	20:14		Middle	2.5	28.00	28.00		8.23	8.23	8.23	29.79	29.79		77.5	77.6		77.5	5.15		5.16	5.15		1.34	
25/5/18	9:55	Fine	Middle	2.5	28.00	28.00	28.00	8.36	8.36	8.36	29.72	29.72	29.73	88.3	87.6	88.2	5.87	5.82	5.86	6.45	6.46	6.49	4	4.00
	9:57		Middle	2.5	28.00	28.00		8.36	8.36	8.36	29.73	29.73		88.3	88.4		88.3	5.86		5.87	5.86		6.51	

Remarks:  
Single underline denotes exceedance over Action Level.  
Double underline denotes exceedance over Limit Level.



**Water Monitoring Result at RW21-P789 - GEC/CRB/SHK  
Mid-Ebb Tide**

Date	Time	Weather Condition	Sampling Depth		Water Temperature			pH			Salinity			DO Saturation			DO			Turbidity			Suspended Solids	
					°C		-		ppt		%		mg/L		NTU		mg/L							
					Value	Average	Value	Average	Value	Average	Value	Average	Value	Average	Value	Average	Value	Average	Value	Average				
27/4/18	16:10	Cloudy	Middle	3.5	25.00	25.00	25.10	8.17	8.15	8.16	32.46	32.46	32.46	86.4	86.1	86.2	5.92	5.91	5.91	8.17	8.18	8.18	3	2.50
	16:12		Middle	3.5	25.20	25.20		8.15	8.17		32.45	32.45		86.2	86.0		5.90	5.89		8.19	8.19		2	
30/4/18	12:50	Cloudy	Middle	3.5	24.90	24.90	24.95	8.16	8.16	8.16	32.29	32.29	32.29	76.4	76.5	76.6	5.26	5.27	5.27	9.94	9.89	9.91	22	<u>23.00</u>
	12:52		Middle	3.5	25.00	25.00		8.15	8.15		32.29	32.29		76.6	76.7		5.27	5.27		9.89	9.93		24	
2/5/18	11:45	Fine	Middle	3.5	26.30	26.30	26.40	8.06	8.06	8.07	32.10	32.10	32.10	80.2	80.6	80.2	5.39	5.41	5.38	8.49	8.44	8.45	8	8.00
	11:47		Middle	3.5	26.50	26.50		8.08	8.08		32.10	32.10		79.7	80.1		5.34	5.36		8.44	8.44		8	
4/5/18	13:30	Cloudy	Middle	4.0	24.50	24.50	24.50	8.29	8.29	8.29	32.87	32.87	32.87	90.1	90.1	89.8	6.23	6.22	6.21	7.87	7.86	7.83	8	9.00
	13:32		Middle	4.0	24.50	24.50		8.29	8.29		32.87	32.87		89.5	89.6		6.19	6.19		7.74	7.83		10	
7/5/18	16:00	Cloudy	Middle	3.5	26.90	26.90	26.95	8.33	8.33	8.34	31.89	31.89	31.89	99.4	99.6	99.1	6.63	6.64	6.61	7.74	7.82	7.80	7	6.00
	16:02		Middle	3.5	27.00	27.00		8.34	8.34		31.88	31.88		98.9	98.6		6.59	6.57		7.83	7.80		5	
9/5/18	20:10	Cloudy	Middle	3.5	23.30	23.30	23.30	8.05	8.05	8.05	31.55	31.55	31.55	76.2	76.6	74.6	5.41	5.44	5.30	2.21	1.95	2.07	4	4.00
	20:11		Middle	3.5	23.30	23.30		8.05	8.05		31.55	31.55		73.6	72.0		5.23	5.11		2.10	2.03		4	
12/5/18	8:30	Cloudy	Middle	4.0	25.10	25.10	25.15	8.12	8.12	8.16	33.01	33.01	33.01	84.8	84.8	84.1	5.79	5.78	5.73	8.33	8.34	8.34	6	5.00
	8:32		Middle	4.0	25.20	25.20		8.19	8.19		33.01	33.01		83.6	83.1		5.69	5.66		8.35	8.34		4	
14/5/18	11:15	Fine	Middle	3.5	26.30	26.30	26.40	8.20	8.20	8.20	32.20	32.20	32.20	84.0	84.0	83.6	5.65	5.65	5.62	9.37	9.37	9.39	8	7.50
	11:17		Middle	3.5	26.50	26.50		8.20	8.20		32.19	32.19		83.1	83.4		5.57	5.60		9.40	9.40		7	
16/5/18	11:50	Fine	Middle	3.5	26.70	26.70	26.70	8.19	8.19	8.19	31.08	31.08	31.09	77.2	77.4	77.5	5.19	5.20	5.25	8.80	8.80	8.80	9	10.00
	11:52		Middle	3.5	26.70	26.70		8.19	8.19		31.09	31.09		77.6	77.6		5.31	5.31		8.80	8.81		11	
19/5/18	15:17	Fine	Middle	4.0	27.90	27.90	28.00	8.19	8.19	8.19	29.64	29.64	29.65	83.1	82.9	82.5	5.51	5.50	5.47	8.15	8.15	8.14	4	4.50
	15:19		Middle	4.0	28.10	28.10		8.19	8.19		29.65	29.65		82.0	81.8		5.43	5.42		8.13	8.13		5	
21/5/18	17:35	Fine	Middle	4.0	28.30	28.30	28.35	8.18	8.18	8.19	29.68	29.68	29.68	83.2	83.8	83.5	5.49	5.53	5.51	9.22	9.14	9.18	4	4.50
	17:37		Middle	4.0	28.40	28.40		8.20	8.20		29.68	29.68		83.1	83.9		5.48	5.53		9.18	9.17		5	
23/5/18	20:40	Fine	Middle	3.5	27.50	27.50	27.50	8.16	8.16	8.16	30.24	30.24	30.24	61.6	60.1	60.8	4.11	4.07	4.09	1.42	1.40	1.38	9	9.50
	20:41		Middle	3.5	27.50	27.50		8.16	8.16		30.24	30.24		61.0	60.6		4.08	4.09		1.39	1.32		10	
25/5/18	8:00	Fine	Middle	4.0	28.00	28.00	28.10	8.17	8.17	8.19	30.80	30.80	30.80	82.2	83.3	83.0	5.41	5.48	5.46	8.70	8.69	8.67	4	5.00
	8:02		Middle	4.0	28.20	28.20		8.21	8.21		30.80	30.80		83.3	83.3		5.47	5.46		8.64	8.64		6	

Remarks:  
Single underline denotes exceedance over Action Level.  
Double underline denotes exceedance over Limit Level.



**Water Monitoring Result at WSD19 - Sheung Wan  
Mid-Ebb Tide**

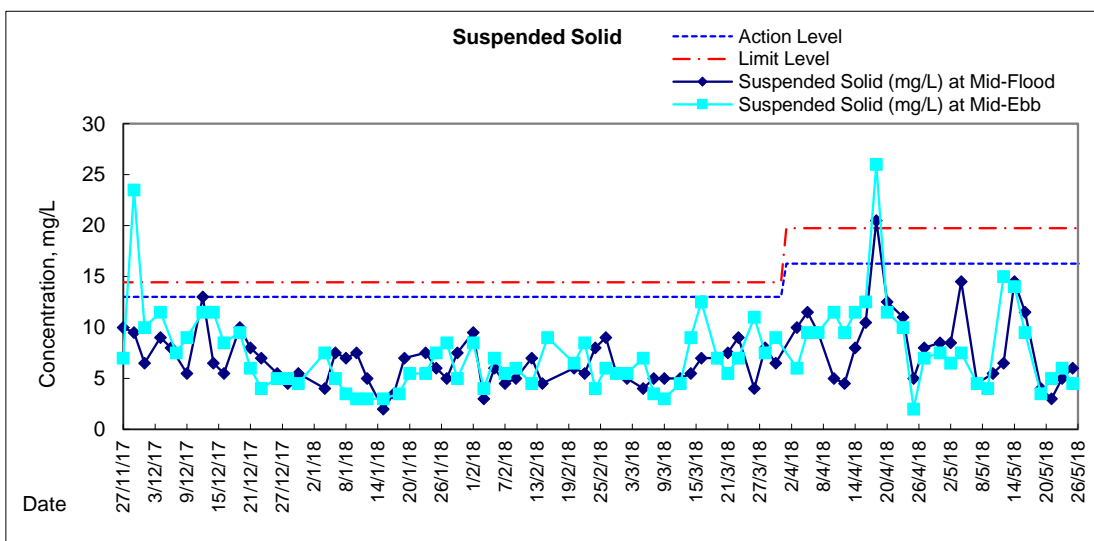
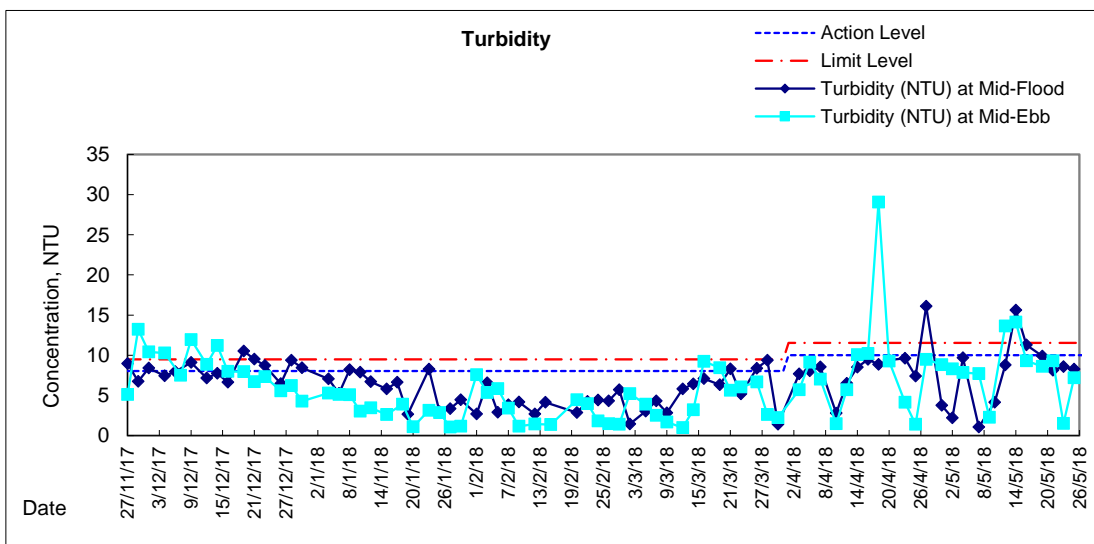
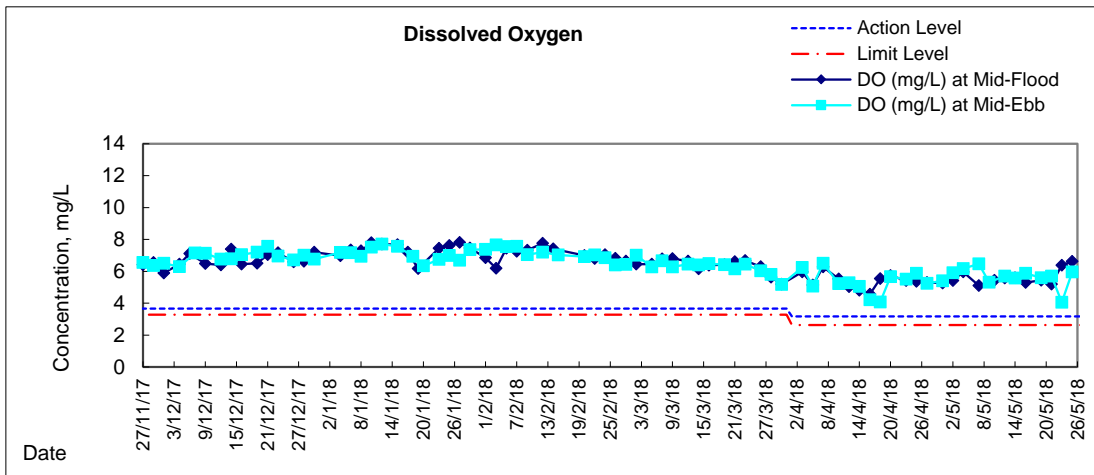
Date	Time	Weather Condition	Sampling Depth		Water Temperature			pH			Salinity			DO Saturation			DO			Turbidity			Suspended Solids	
					°C		-		ppt		%		mg/L		NTU		mg/L							
					Value	Average	Value	Average	Value	Average	Value	Average	Value	Average	Value	Average	Value	Average	Value	Average				
27/4/18	17:10	Cloudy	Middle	4.0	24.70	24.70	24.90	8.14	8.14	8.15	32.59	32.59	32.59	75.6	76.3	76.1	5.20	5.26	5.25	9.51	9.58	9.50	8	7.00
	17:12		Middle	4.0	25.10	25.10		8.16	8.16		32.58	32.58		76.5	76.0		5.30	5.22		9.47	9.42		6	
30/4/18	14:15	Cloudy	Middle	3.5	25.80	25.80	25.80	8.11	8.19	8.15	31.55	31.76	31.65	79.5	79.5	79.2	5.42	5.43	5.40	8.91	8.85	8.83	8	7.50
	14:17		Middle	3.5	25.80	25.80		8.11	8.19		31.55	31.75		78.8	79.1		5.37	5.39		8.79	8.75		7	
2/5/18	14:15	Fine	Middle	3.5	26.70	26.70	26.75	8.22	8.19	8.21	31.29	31.29	31.29	87.8	88.0	87.9	5.90	5.91	5.90	8.28	8.29	8.32	6	6.50
	14:17		Middle	3.5	26.80	26.80		8.22	8.19		31.28	31.28		87.7	88.0		5.88	5.91		8.37	8.32		7	
4/5/18	14:25	Cloudy	Middle	4.0	25.00	25.00	25.00	8.26	8.26	8.27	32.36	32.36	32.36	90.4	90.6	90.0	6.21	6.22	6.18	7.88	7.85	7.86	7	7.50
	14:27		Middle	4.0	25.00	25.00		8.27	8.27		32.36	32.36		89.9	89.2		6.15	6.12		7.85	7.86		8	
7/5/18	17:35	Cloudy	Middle	3.5	26.40	26.40	26.55	8.22	8.22	8.27	31.25	31.25	31.25	96.8	96.6	96.1	6.52	6.50	6.46	7.76	7.74	7.71	5	4.50
	17:37		Middle	3.5	26.70	26.70		8.32	8.32		31.24	31.24		95.8	95.2		6.43	6.38		7.68	7.66		4	
9/5/18	18:00	Cloudy	Middle	4.0	23.30	23.30	23.30	8.03	8.03	8.03	32.61	32.61	32.61	75.6	75.7	75.1	5.34	5.35	5.31	2.04	2.82	2.26	4	4.00
	18:01		Middle	4.0	23.30	23.30		8.03	8.03		32.61	32.61		74.9	74.3		5.30	5.26		2.12	2.07		<2	
12/5/18	9:40	Cloudy	Middle	4.0	25.50	25.50	25.60	8.13	8.13	8.15	32.78	32.78	32.78	84.9	84.9	84.1	5.76	5.76	5.70	13.56	13.65	13.63	16	15.00
	9:42		Middle	4.0	25.70	25.70		8.16	8.16		32.77	32.77		83.4	83.2		5.65	5.64		13.63	13.67		14	
14/5/18	12:45	Fine	Middle	3.5	27.90	27.90	28.05	8.19	8.19	8.19	31.15	31.15	31.15	85.1	85.3	85.1	5.59	5.59	5.58	14.11	14.11	14.11	14	14.00
	12:47		Middle	3.5	28.20	28.20		8.19	8.19		31.14	31.14		84.9	85.0		5.56	5.56		14.10	14.12		14	
16/5/18	12:50	Fine	Middle	3.5	27.40	27.40	27.60	8.17	8.17	8.19	29.90	29.90	29.90	88.2	89.0	88.4	5.87	5.92	5.88	9.33	9.26	9.32	9	9.50
	12:52		Middle	3.5	27.80	27.80		8.21	8.21		29.89	29.89		88.2	88.1		5.86	5.85		9.32	9.37		10	
19/5/18	13:50	Fine	Middle	4.0	29.20	29.20	29.30	8.27	8.27	8.26	28.45	28.45	28.45	86.1	86.2	85.7	5.62	5.63	5.59	8.59	8.60	8.60	3	3.50
	13:52		Middle	4.0	29.40	29.40		8.25	8.25		28.45	28.45		85.5	85.1		5.57	5.54		8.60	8.60		4	
21/5/18	16:40	Fine	Middle	4.0	27.60	27.60	27.60	8.24	8.24	8.24	29.34	29.34	29.34	85.1	85.1	85.2	5.70	5.69	5.70	9.40	9.34	9.31	4	5.00
	16:42		Middle	4.0	27.60	27.60		8.24	8.24		29.34	29.34		85.5	85.2		5.72	5.70		9.27	9.23		6	
23/5/18	18:30	Fine	Middle	4.0	27.60	27.60	27.60	8.25	8.25	8.25	29.47	29.47	29.47	60.0	60.7	60.7	4.02	4.06	4.06	1.73	1.48	1.50	8	6.00
	18:31		Middle	4.0	27.60	27.60		8.25	8.25		29.47	29.47		60.6	61.5		4.05	4.12		1.37	1.40		4	
25/5/18	8:55	Fine	Middle	4.0	28.80	28.80	28.80	8.26	8.26	8.28	29.38	29.38	29.38	91.5	91.7	91.2	5.99	5.99	5.96	7.20	7.20	7.20	4	4.50
	8:57		Middle	4.0	28.80	28.80		8.30	8.30		29.38	29.38		90.7	90.9		5.92	5.93		7.20	7.19		5	

Remarks:  
Single underline denotes exceedance over Action Level.  
Double underline denotes exceedance over Limit Level.



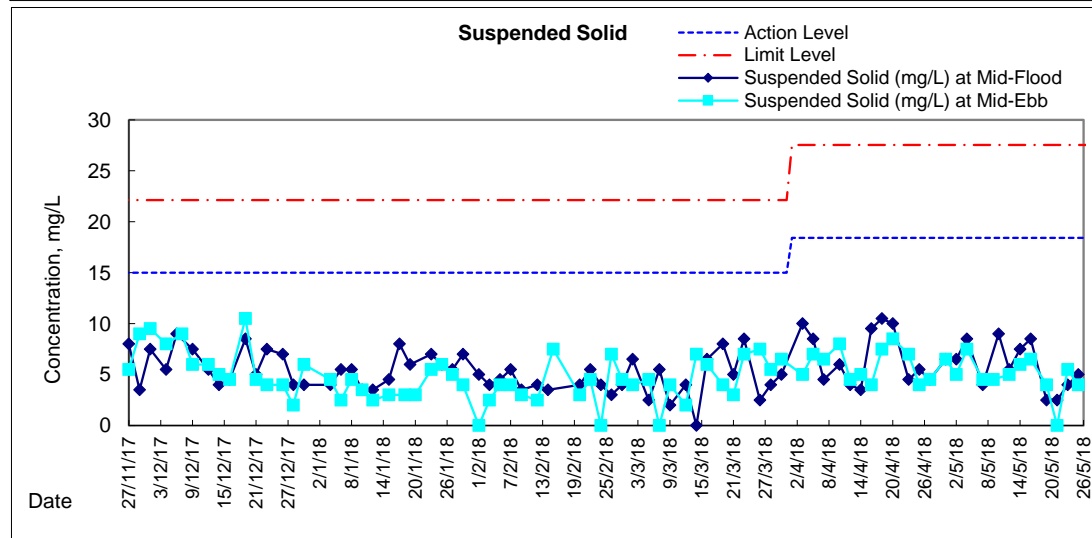
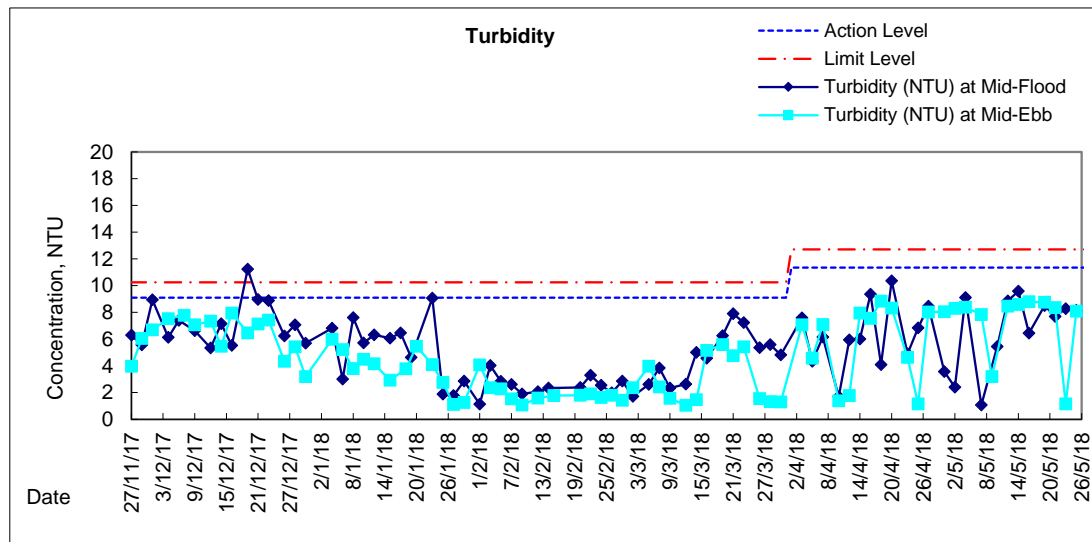
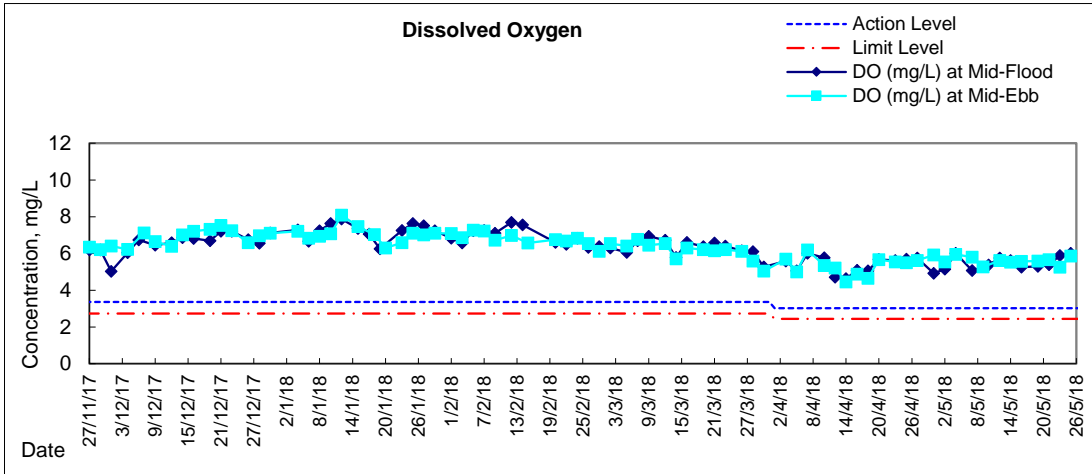


# Graphic Presentation of Water Quality Result of WSD19 - Sheung Wan



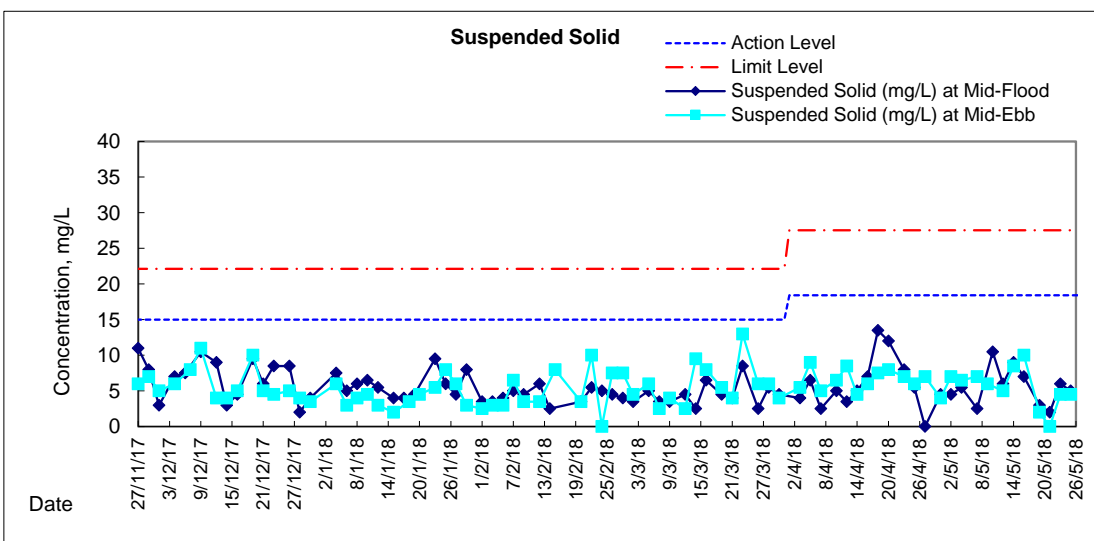
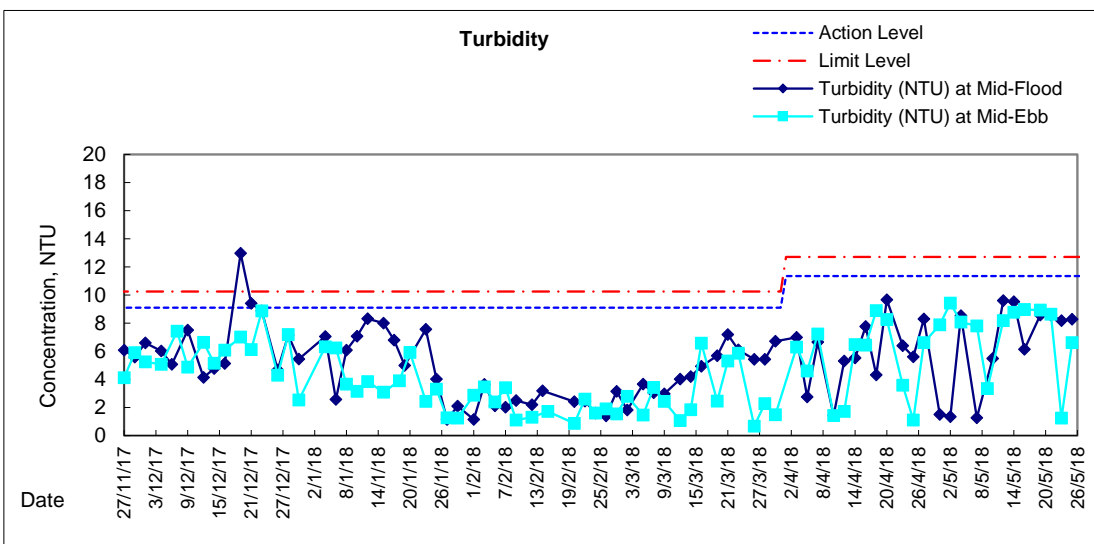
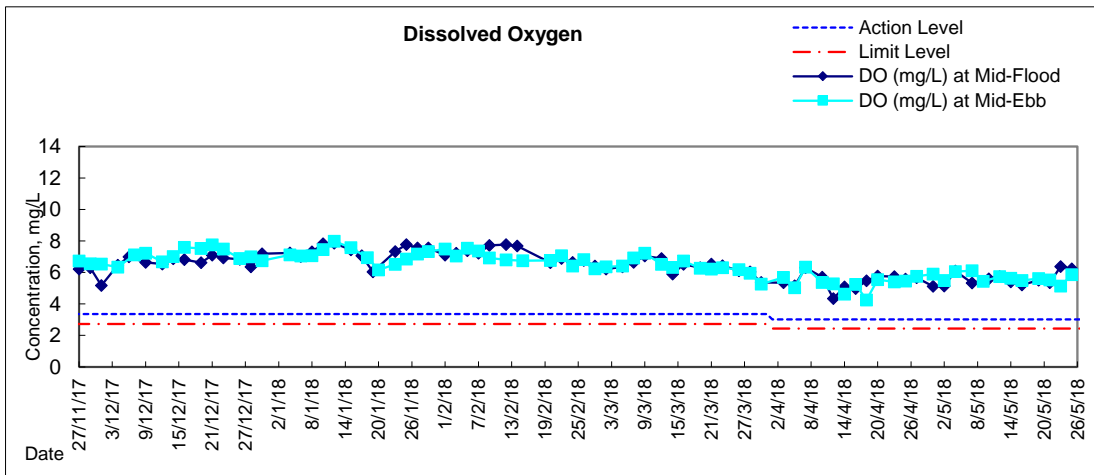


### Graphic Presentation of Water Quality Result of C1 - HKCEC



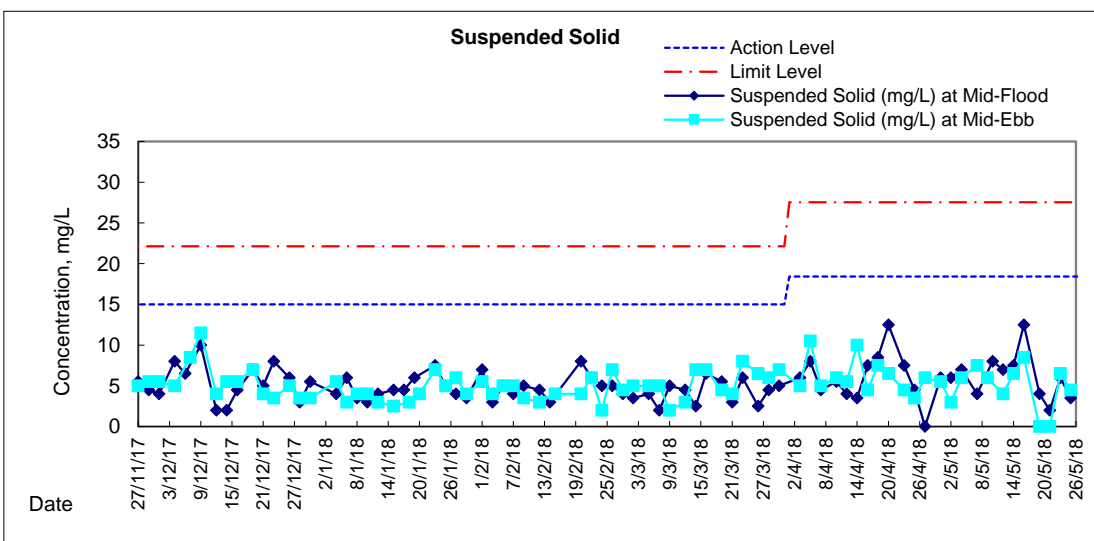
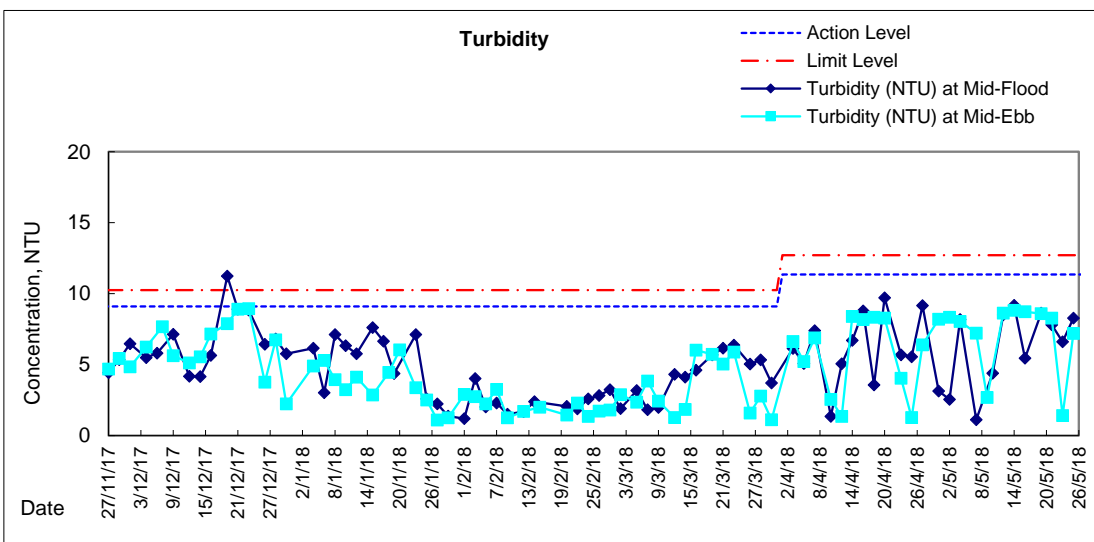
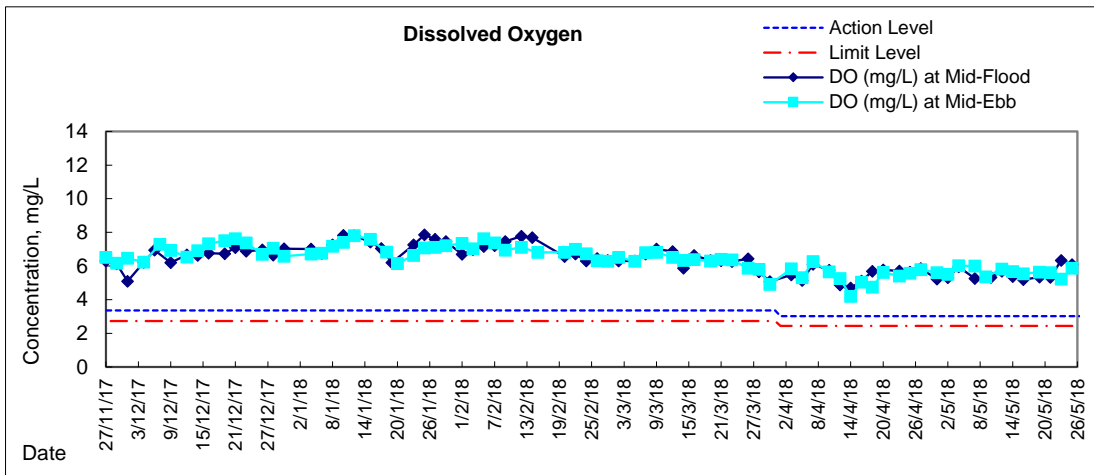


# Graphic Presentation of Water Quality Result of P1 - HKCEC Phase I



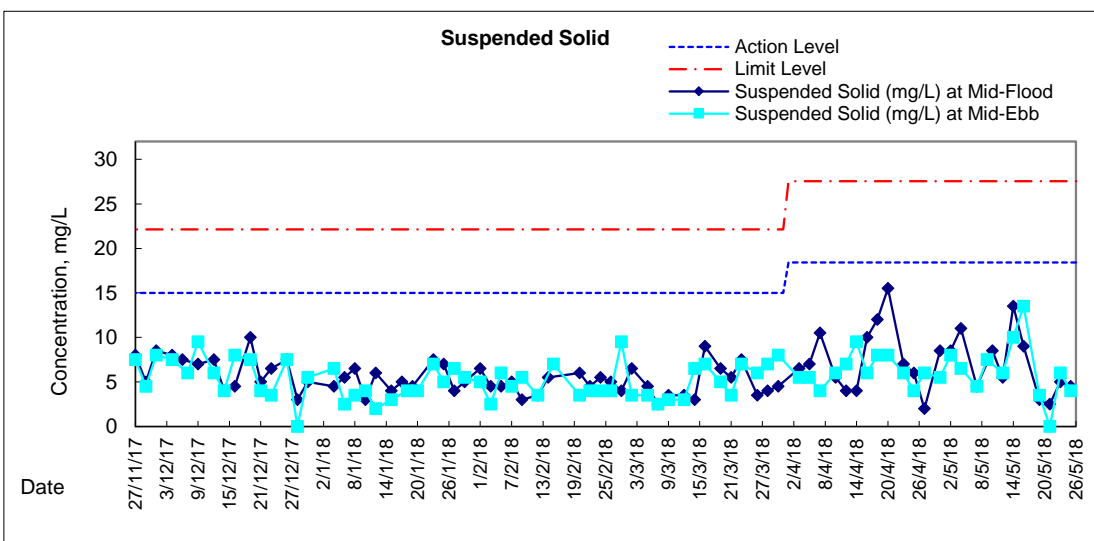
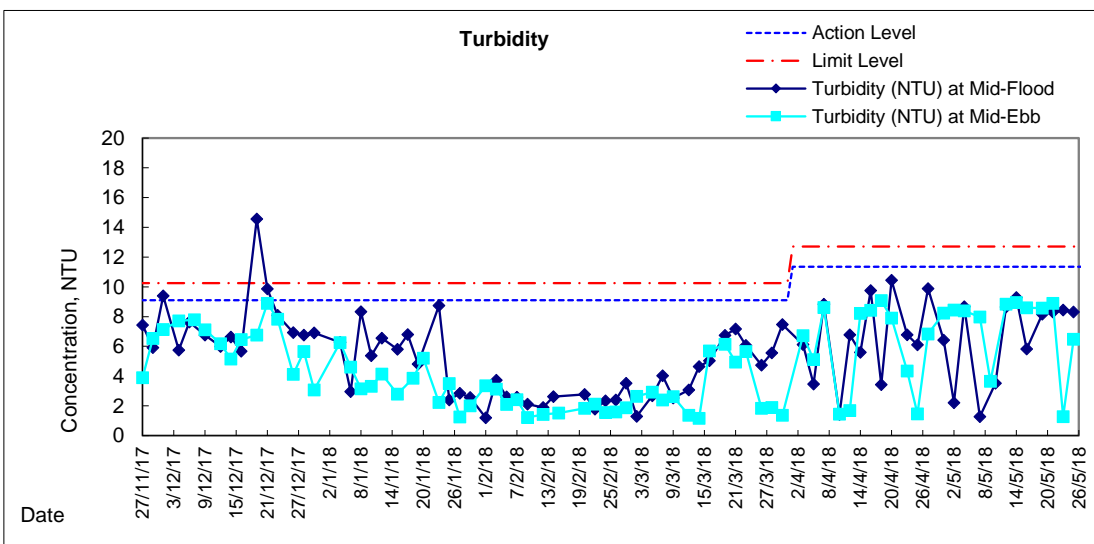
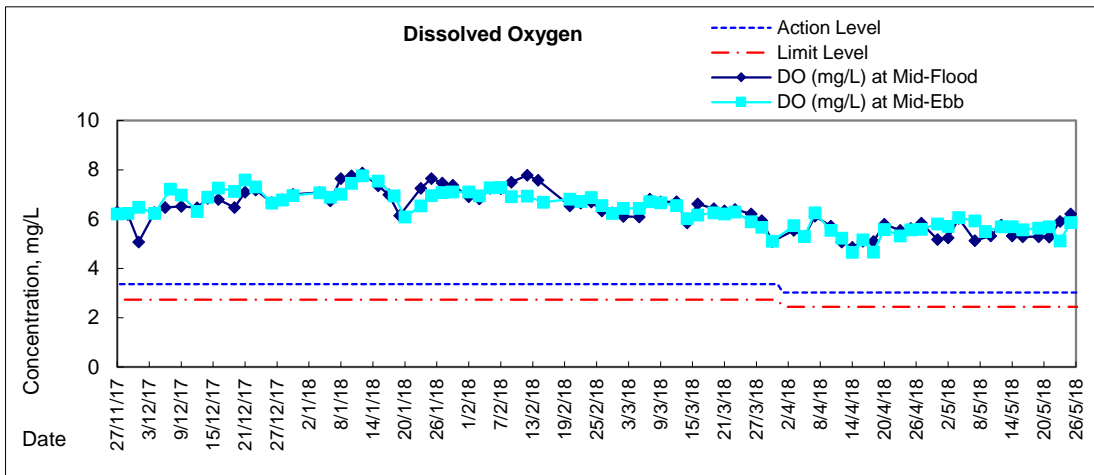


### Graphic Presentation of Water Quality Result of P3 - APA



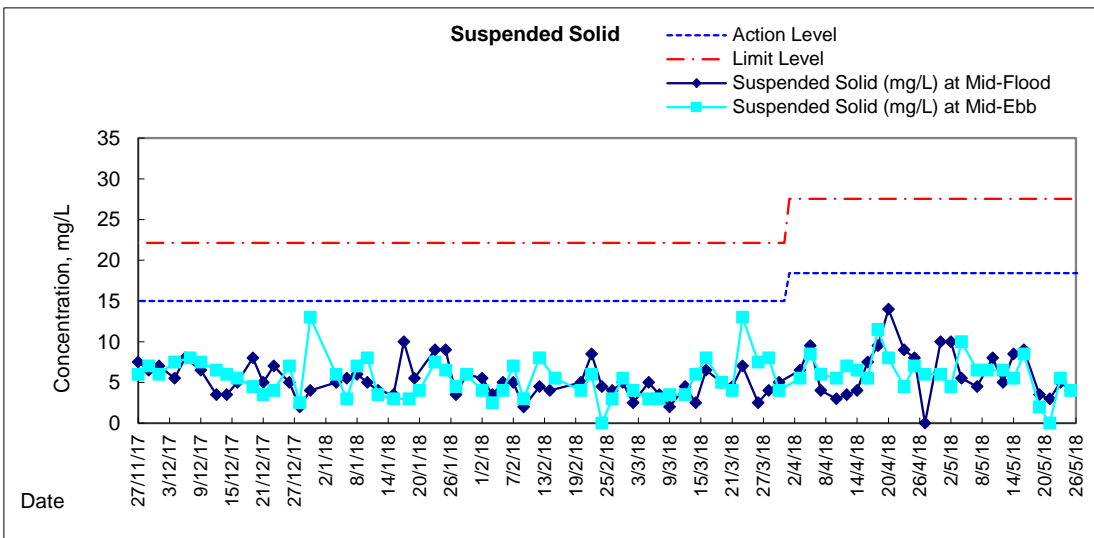
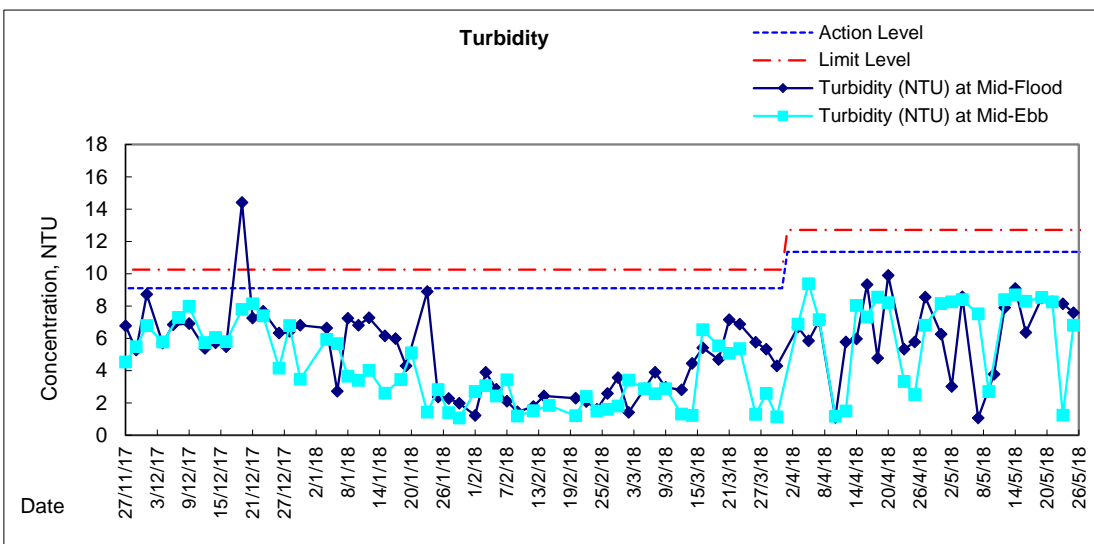
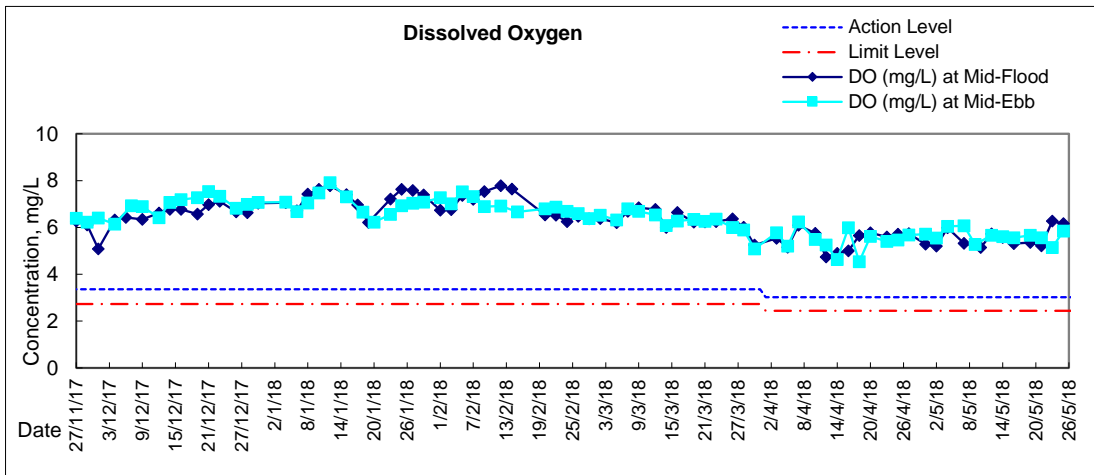


### Graphic Presentation of Water Quality Result of P5 - WCT / RT / IT



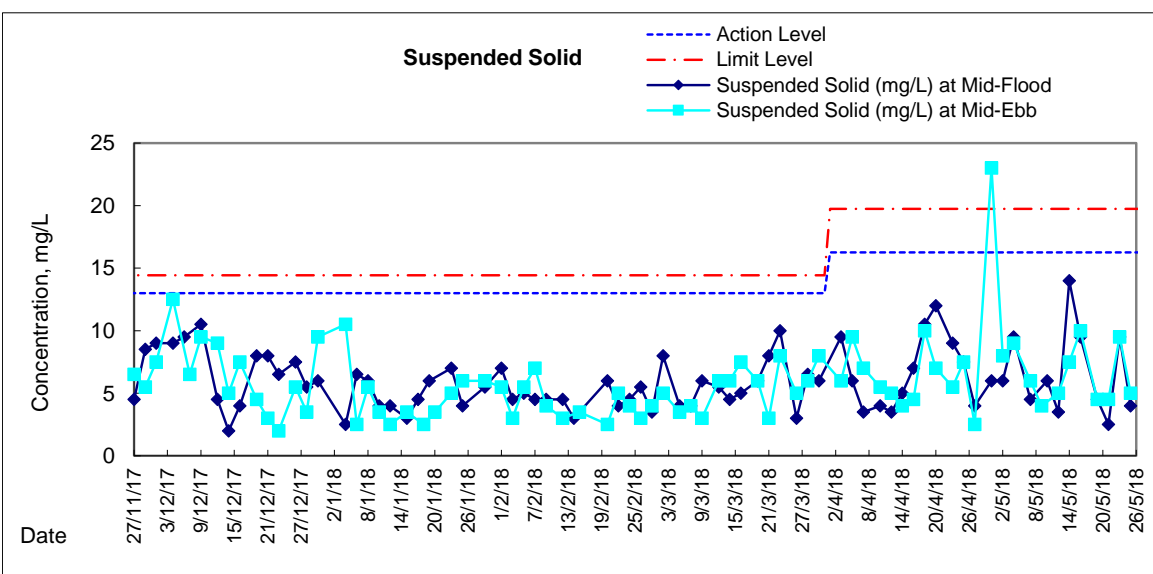
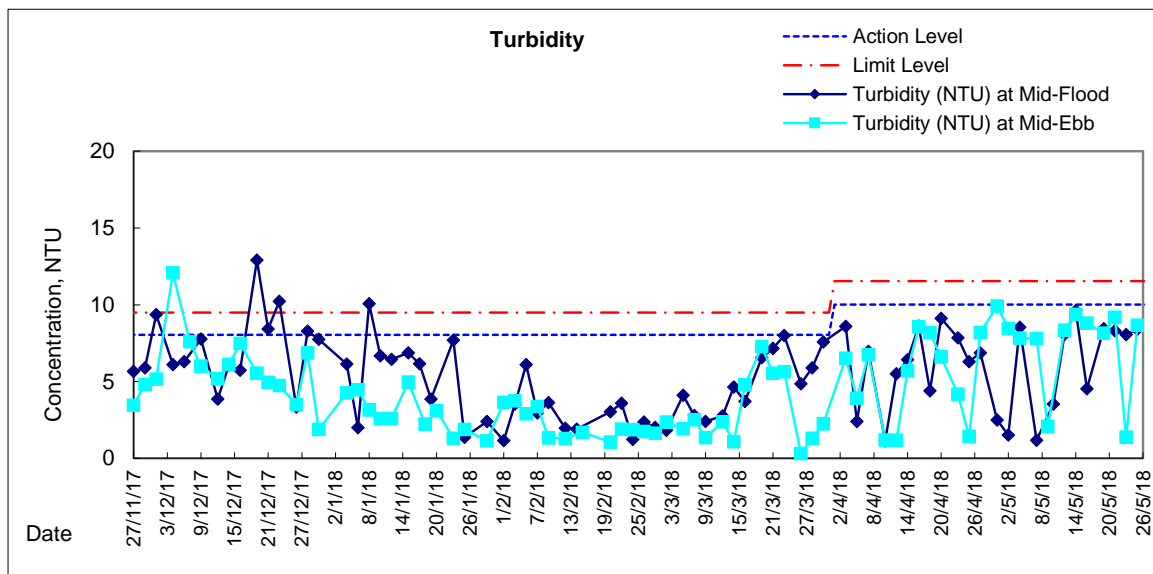
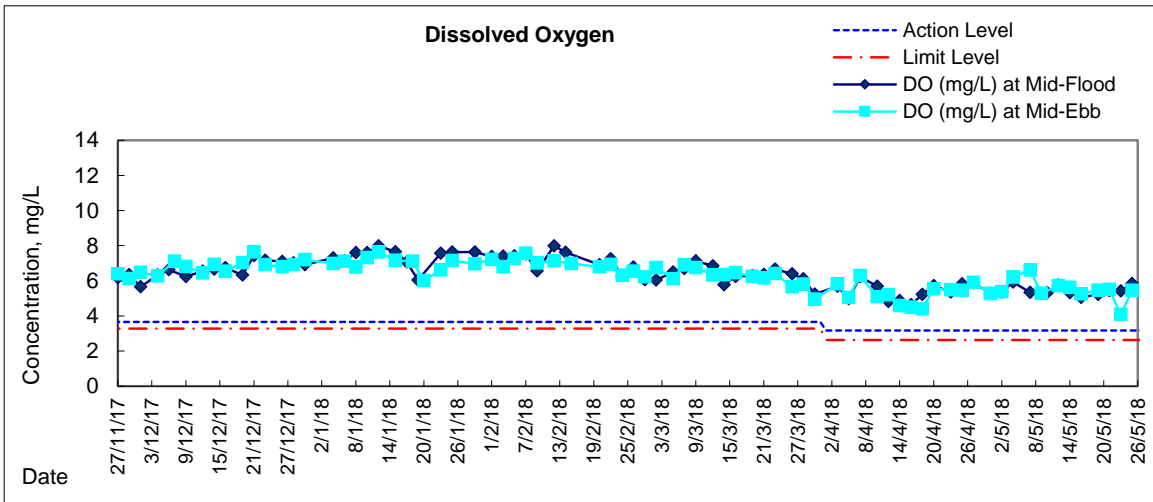


# Graphic Presentation of Water Quality Result of P4 - SOC





# Graphic Presentation of Water Quality Result of RW21-P789 - GEC/CRC/SHK





# Graphic Presentation of Water Quality Result of C7 - Windsor House

